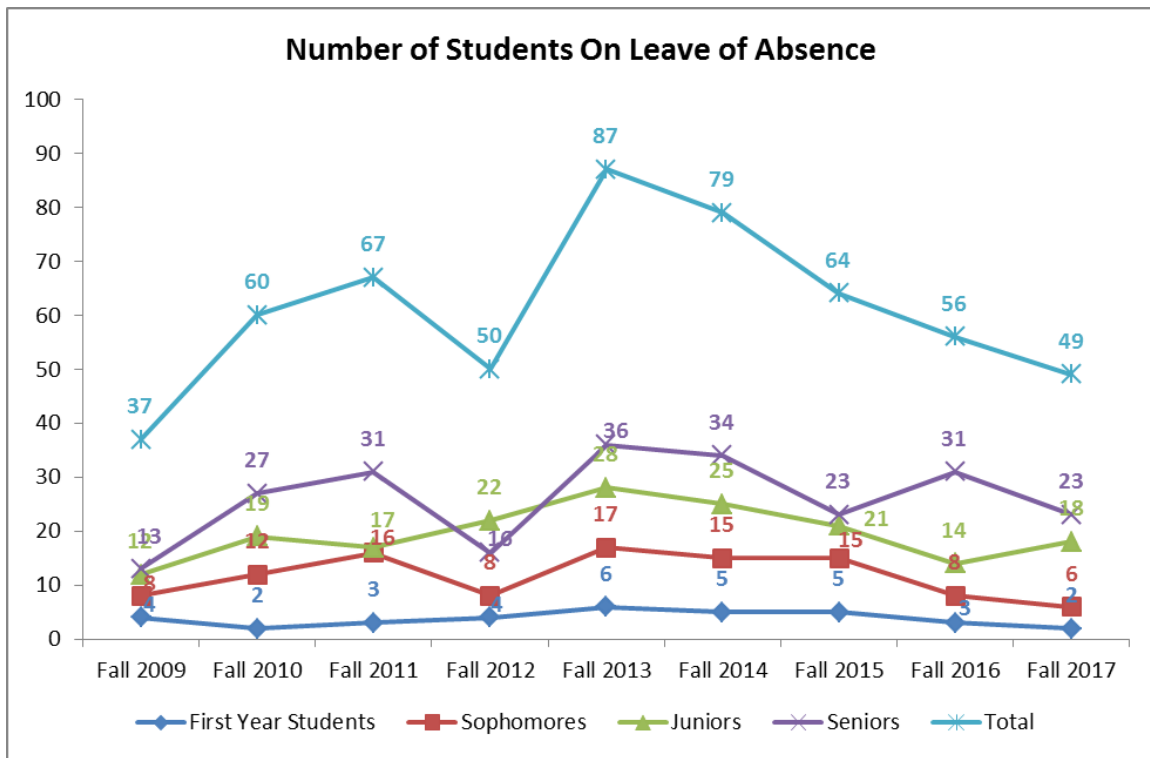


Fall 2017 Student Retention Major Issues Analysis

1. Students on Leave of Absence by Year of Study

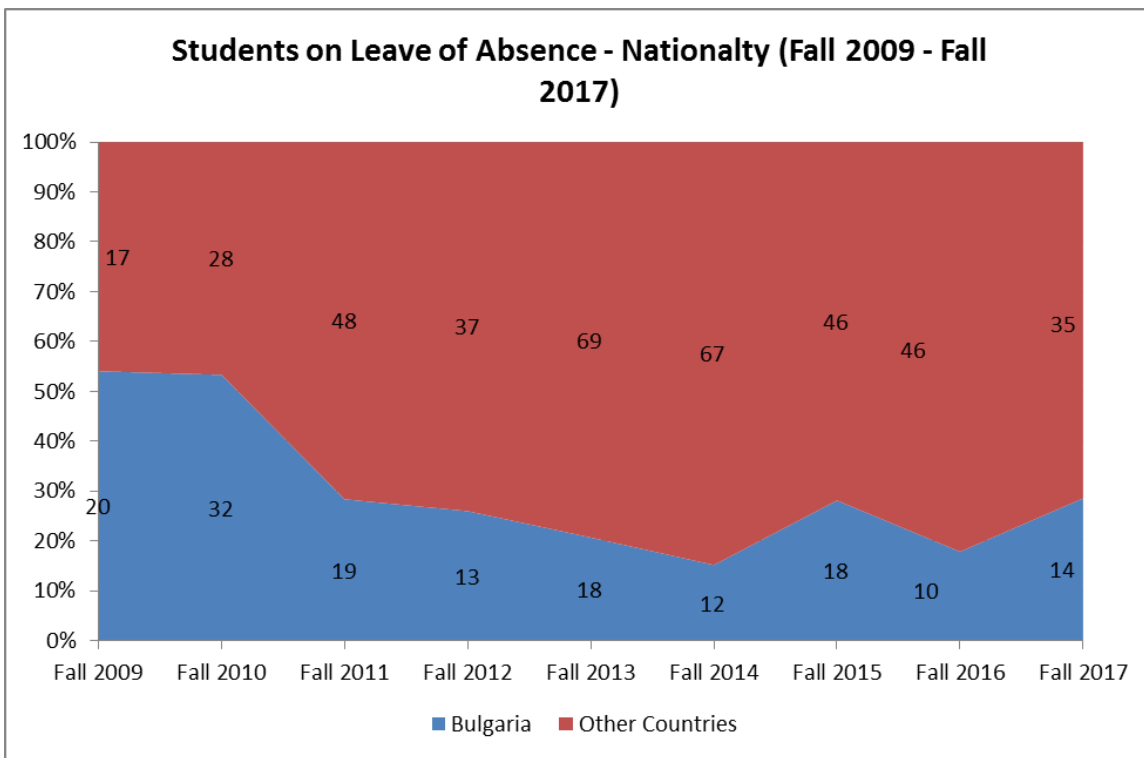
	Fall 2009	Fall 2010	Fall 2011	Fall 2012	Fall 2013	Fall 2014	Fall 2015	Fall 2016	Fall 2017
First Year	4	2	3	4	6	5	5	3	2
Sophomores	8	12	16	8	17	15	15	8	6
Juniors	12	19	17	22	28	25	21	14	18
Seniors	13	27	31	16	36	34	23	31	23
Total	37	60	67	50	87	79	64	56	49



The total number of students on leave of absence varies from year to year. We had only 37 students taking a LOA in 2009 and reached 87 students in Fall 2013. This semester, we have 49 students on LOA. As in the previous two years, in 2017 mostly seniors and juniors apply for leaves of absence and only 4% of those granted in 2017 went to first year students. This is a normal percentage of leaves as seen on the chart above.

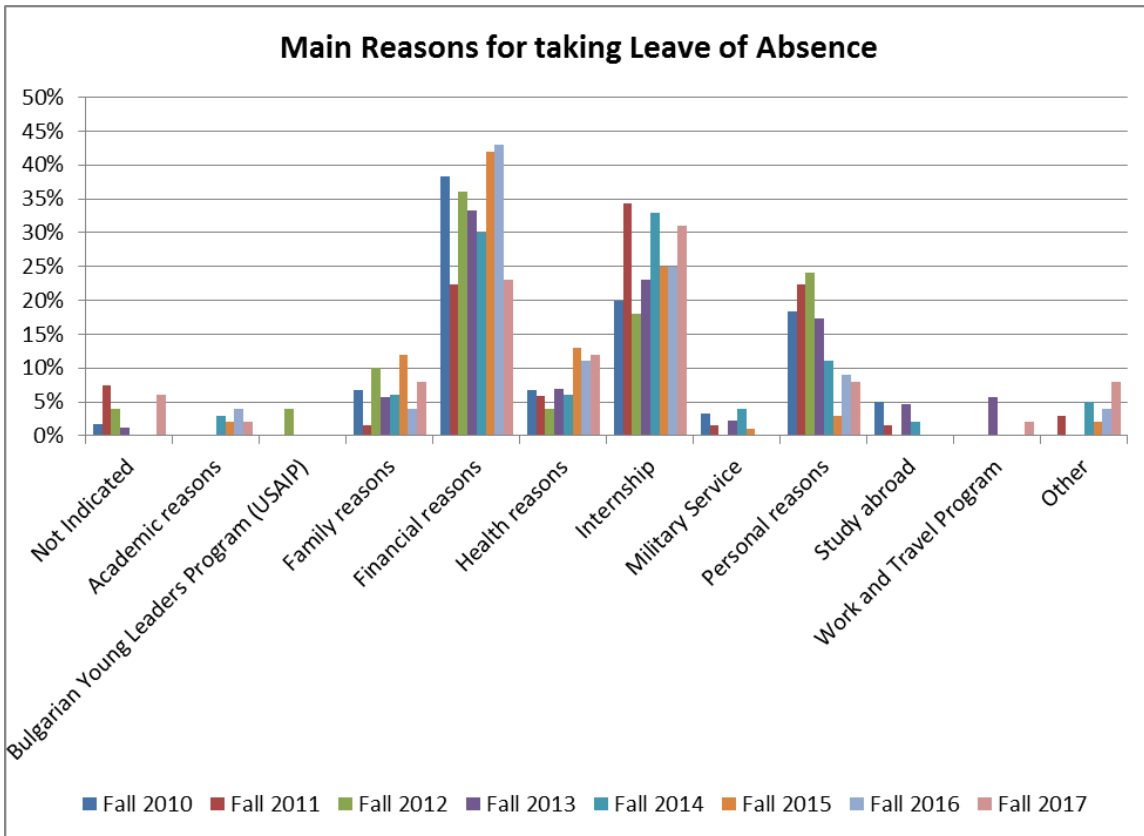
2. Students on Leave of Absence by Nationality

The proportion Bulgarian students on leave in Fall 2017, 29%, reached the levels of 2011 and 2015, still considerably lower than in 2009, when it stood at 54%. The proportion of international students on leave has moved in the opposite direction from 46% in 2009 to 82% in 2016 and 71% in 2017. In Fall 2017, 45% of the student body are international students.



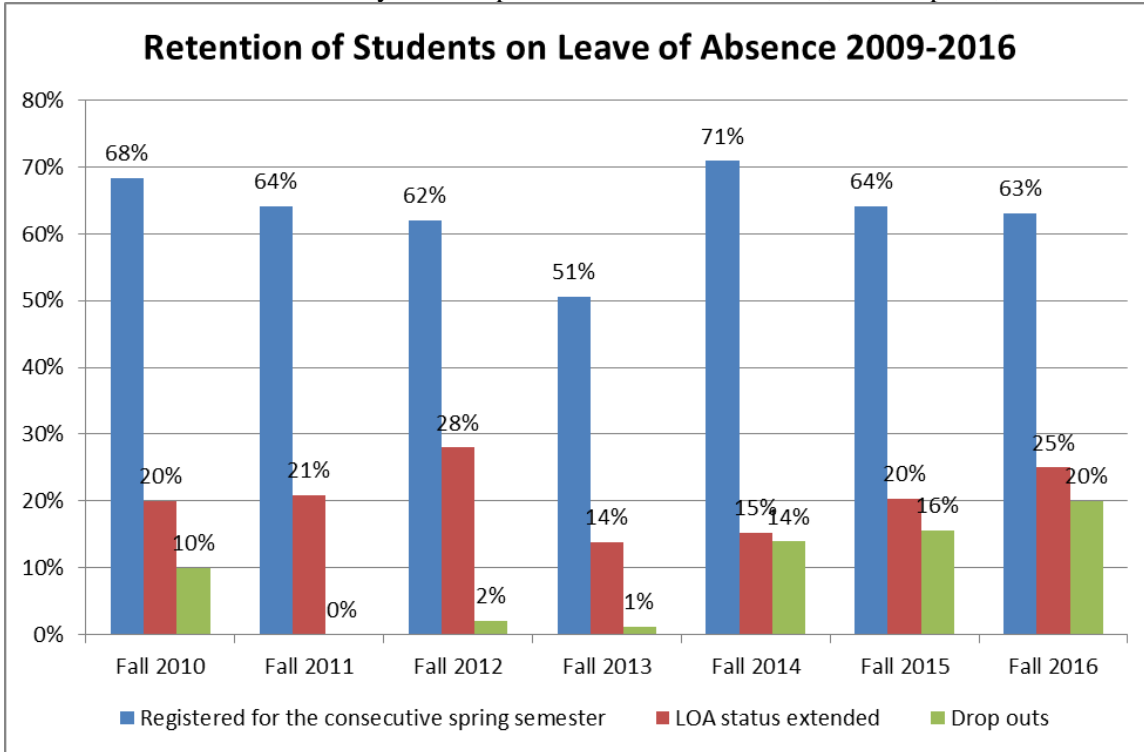
3. Main Reasons for Taking Leave of Absence

Students are asked to self-report the reason for requesting a leave of absence. This year 30% of the students on a leave of absence went on an internship (33% in 2014). “Financial Reasons” is also a common response (23% for 2017). Personal reasons (8%) and health reasons (12%) are the other often cited figures.



4. Students on Leave of Absence – Pre-registered for the Consecutive Spring Semester

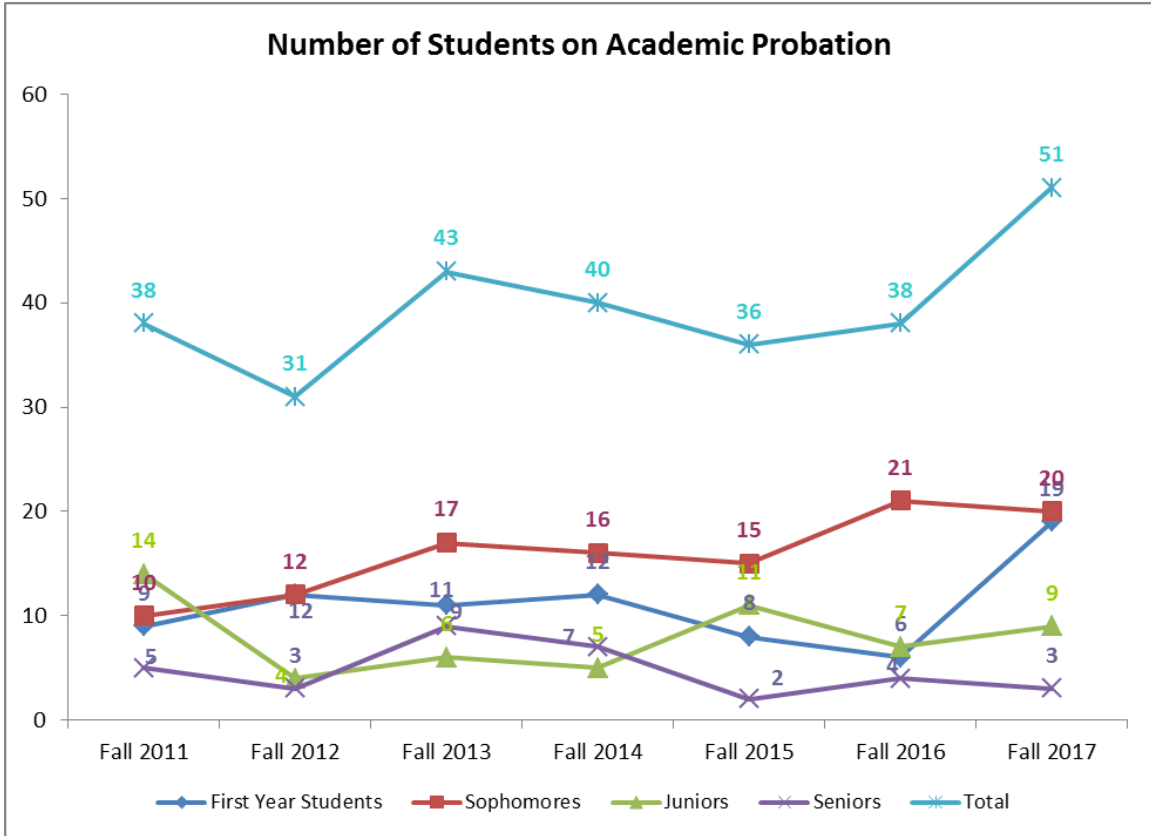
Most students continue to return to AUBG after only a semester of leave. The percentages on the chart below do not always reach up to 100% due to late leaves, late dropouts, or readmits.



4. Students on Academic Probation – Class Standing

	Fall 2009	Fall 2010	Fall 2011	Fall 2012	Fall 2013	Fall 2014	Fall 2015	Fall 2016	Fall 2017
First Year	9	12	9	12	11	12	8	6	19
Sophomores	14	17	10	12	17	16	15	21	20
Juniors	8	14	14	4	6	5	11	7	9
Seniors	5	4	5	3	9	7	2	4	3
Total	36	47	38	31	43	40	36	38	51

We also study the number of students who are not academically successful. In Fall 2017, 51 students are on academic probation, which is the highest number for the past ten years. We monitor students who need support, provide tutoring services for the high risk courses, and make sure course choices are appropriate.

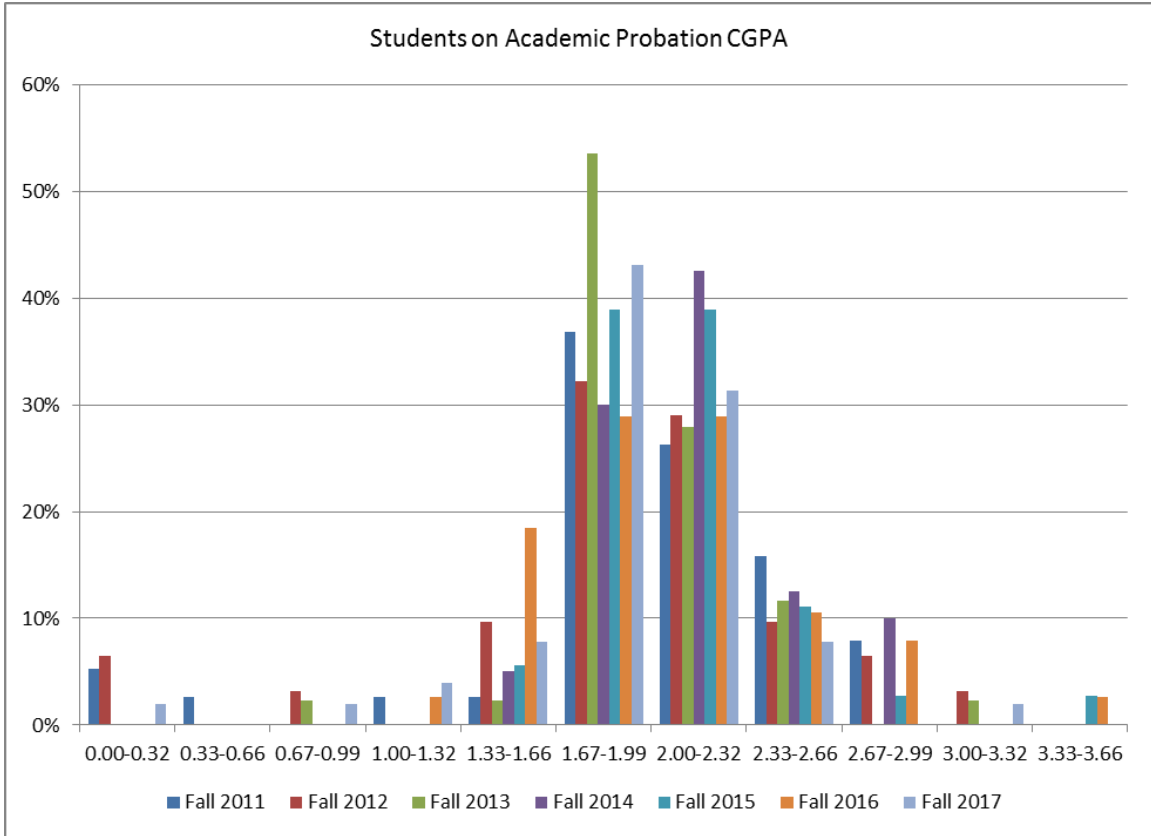


The distribution of students on academic probation has been proportionately higher in the first two years than the second two. This is not surprising, as students’ study skills improve as they advance through their education. This year, we have almost the same percent of juniors on probation as last year and the percentage in seniors (6%) is smaller with the previous years.

5. Students on Academic Probation CGPA

Over half of the students on academic probation during Fall 2017 are with CGPA below 2.00. The rest of the students on probation has a CGPA above 2.0 but had a very bad semester. Through the years, most students on probation have been with a CGPA between 1.67 and 2.32.

Probation CGPA range	Students	Percent
0.00-0.32	1	1.96%
0.33-0.66		
0.67-0.99	1	1.96%
1.00-1.32	2	3.92%
1.33-1.66	4	7.84%
1.67-1.99	22	43.14%
2.00-2.32	16	31.37%
2.33-2.66	4	7.84%
2.67-2.99		
3.00-3.32	1	1.96%
3.33-3.66		



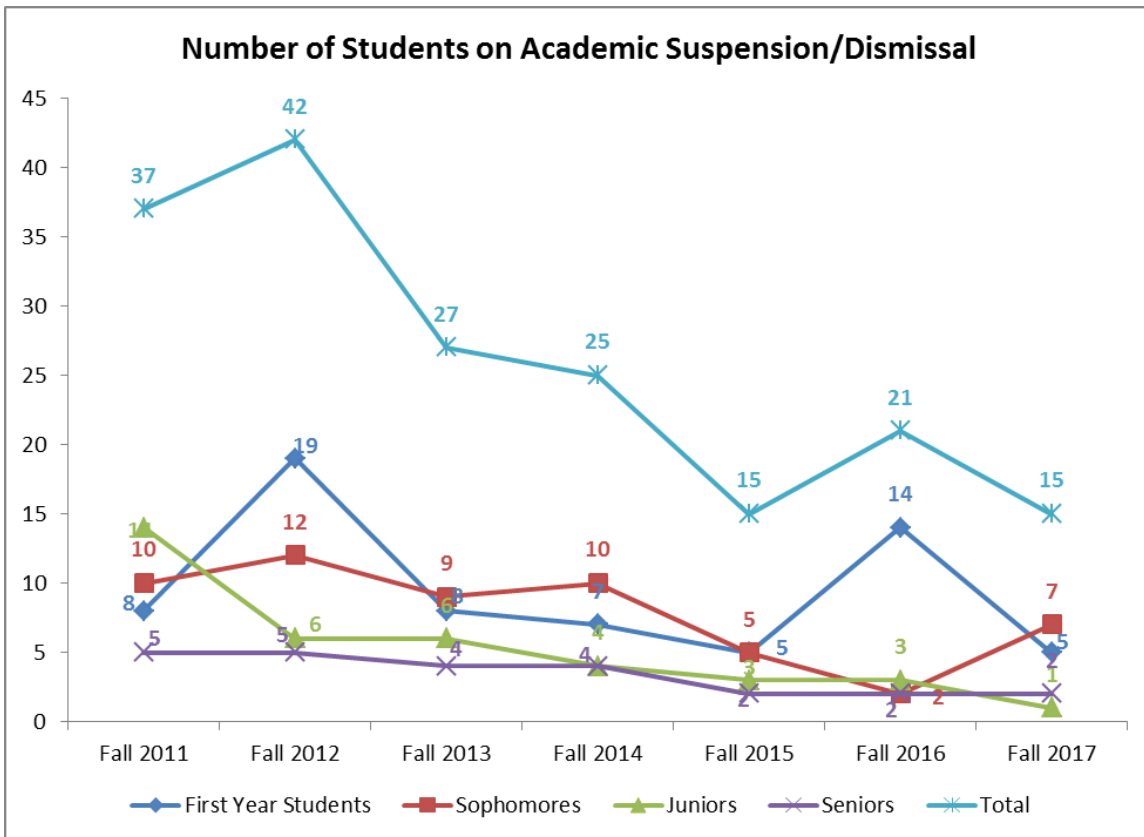
6. Withdrawals Profile

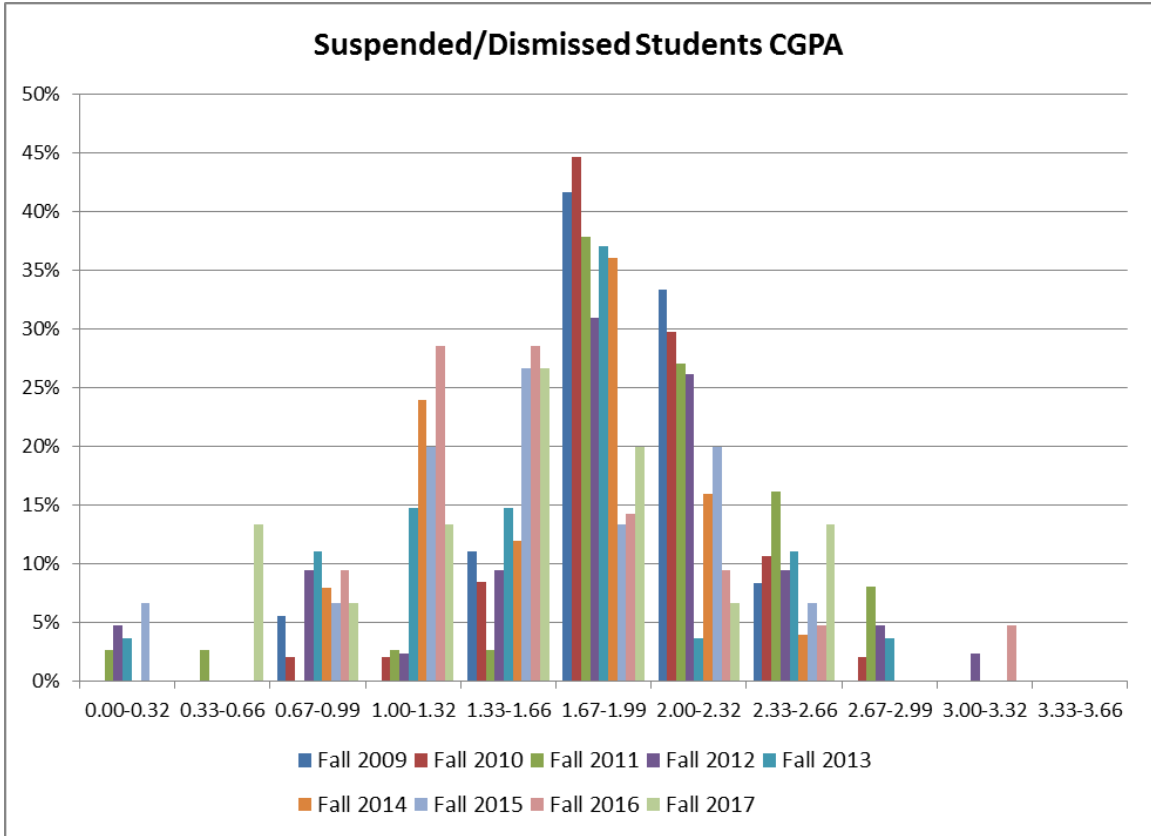
	Fall 2011	Fall 2012	Fall 2013	Fall 2014	Fall 2015	Fall 2016	Fall 2017
First Year	4	17	9	5	14	7	6
Sophomores	10	12	15	11	8	10	10
Juniors	5	6	5	8	8	6	7
Seniors	2	4	2	4	2	7	2
Total	21	39	31	28	32	30	25

The number of withdrawals at AUBG through the years has been low. In the current Fall 2017 semester, there are 25 withdrawals, which is below the average for the past six years. 14 of the students were administrative withdrawals, 4 transferred to another university, 1 had health problems, 2 students did not indicate reasons for withdrawal, and another 4 students had financial or personal reasons for withdrawal.

7. Students on Academic Suspension/Dismissal

	Fall 2011	Fall 2012	Fall 2013	Fall 2014	Fall 2015	Fall 2016	Fall 2017
First Year	8	19	8	7	5	14	5
Sophomores	10	12	9	10	5	2	7
Juniors	14	6	6	4	3	3	1
Seniors	5	5	4	4	2	2	2
Total	37	42	27	25	15	21	15



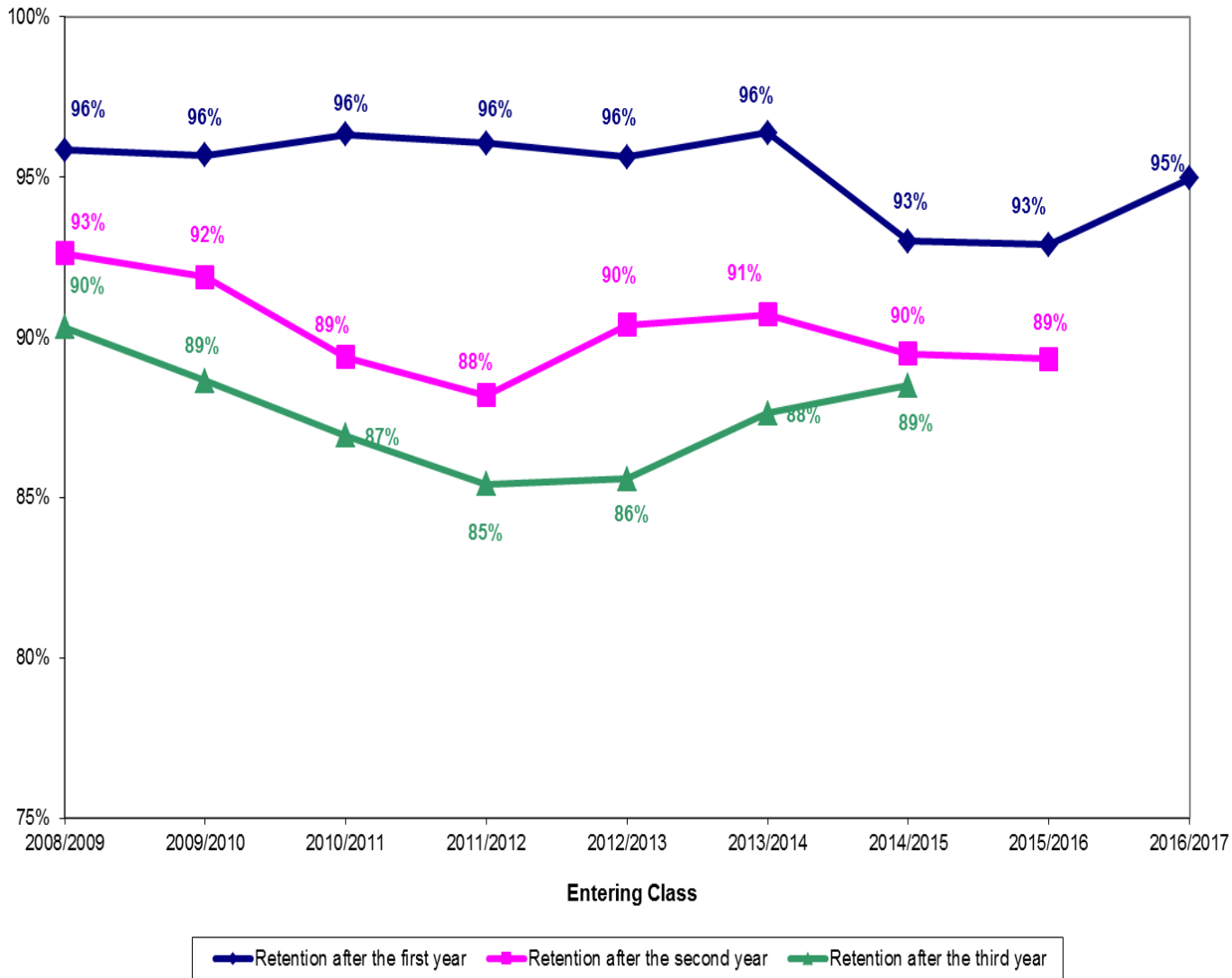


Traditionally, students on suspension/dismissal have low CGPA and most are in 0.67-2.32 range. In the current Fall 2017 semester, we have only 15 suspended/dismissed students compared to 42 in Fall 2012. As in previous years, first year students and sophomores are around 80% of all suspended/dismissed students.

7. Graduation and Attrition Rates

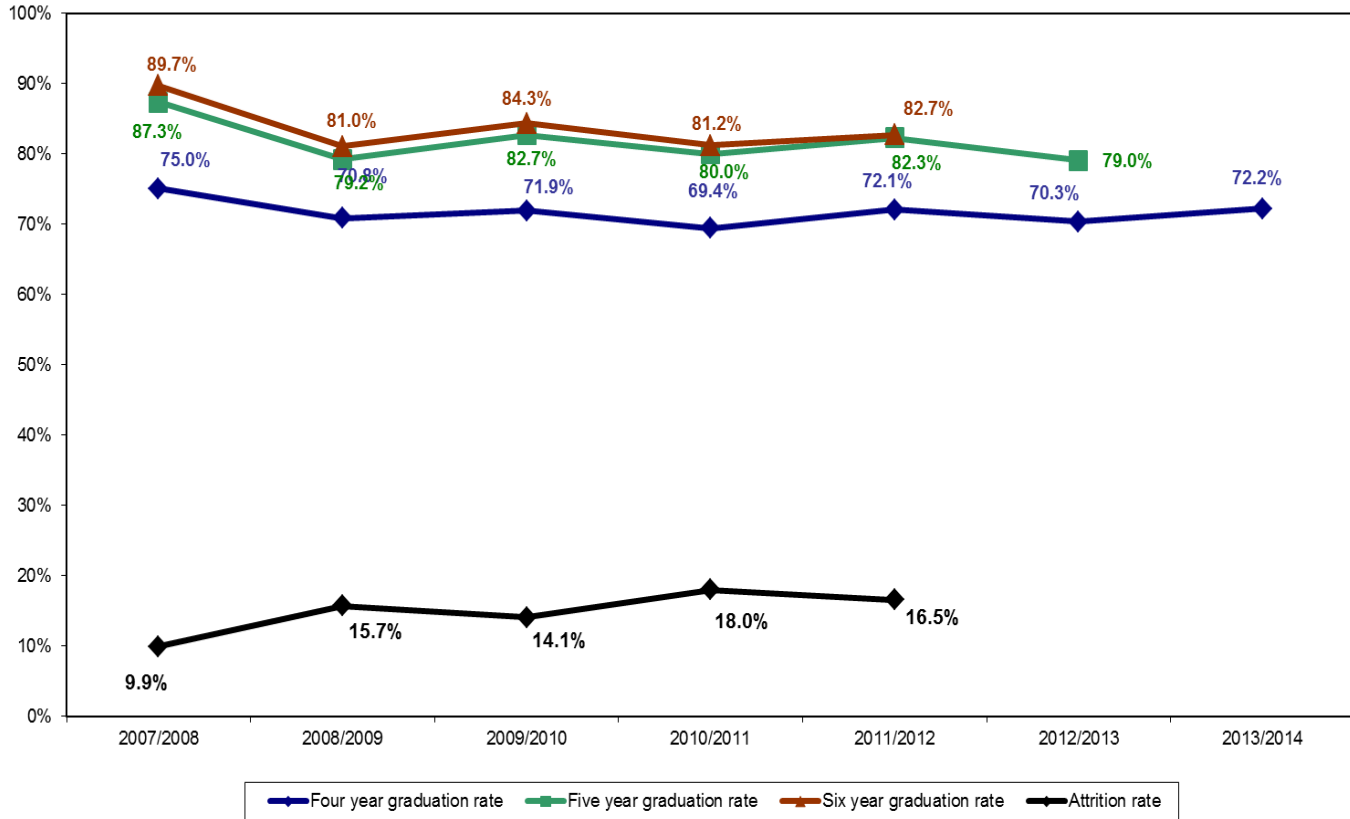
Entering class	2008/2009	2009/2010	2010/2011	2011/2012	2012/2013	2013/2014	2014/2015	2015/2016	2016/2017
Retention after the first year	95.85%	95.68%	96.33%	96.06%	95.63%	96.39%	93.00%	92.89%	94.97%
Retention after the second year	92.63%	91.89%	89.39%	88.19%	90.39%	90.72%	89.50%	89.33%	
Retention after the third year	90.32%	88.65%	86.94%	85.43%	85.59%	87.63%	88.50%		

Student Retention Rate



Entering class	2007/2008	2008/2009	2009/2010	2010/2011	2011/2012	2012/2013	2013/2014
Four year graduation rate	75.02%	70.81%	71.89%	69.39%	72.05%	70.31%	72.16%
Five year graduation rate	87.30%	79.22%	82.70%	80.00%	82.28%	79.04%	
Six year graduation rate	89.71%	81.03%	84.32%	81.22%	82.68%		
Attrition rate	9.90%	15.72%	14.05%	17.96%	16.54%		

Student Graduation and Attrition Rates



Student Retention, graduation, and attrition rates are favorable compared to other universities and are relatively stable throughout the years. Four-year, five-year, and six-year graduation rates have a small downward trend. Very few students remain at AUBG beyond their sixth year of education. For the 2011/2012 entering class, compared to the previous class, we have a slightly smaller attrition rate of 16.5% but we need to continue monitoring all indicators.