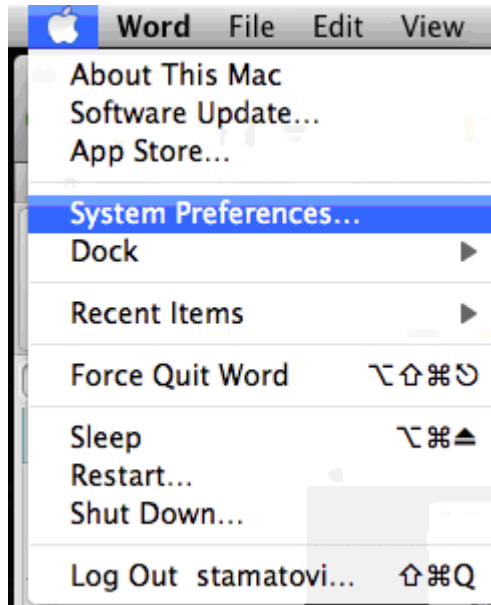
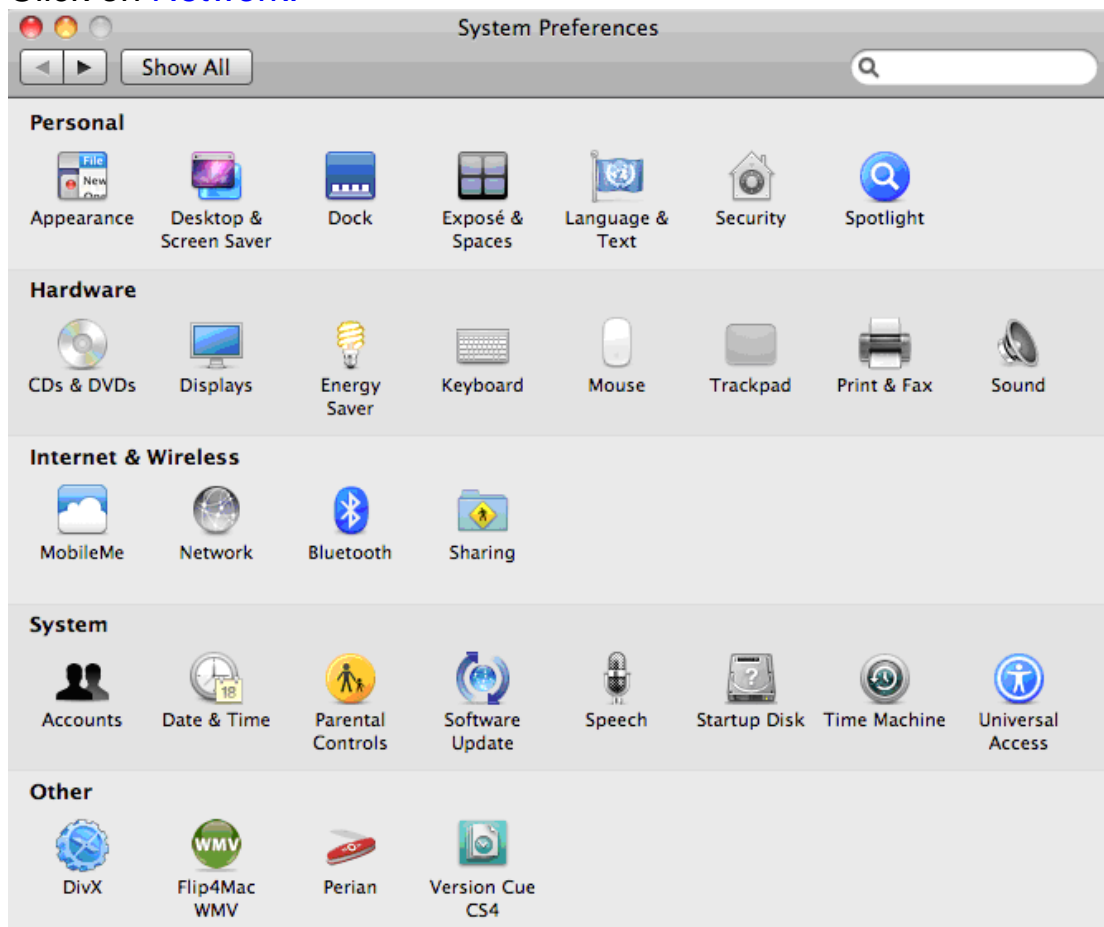


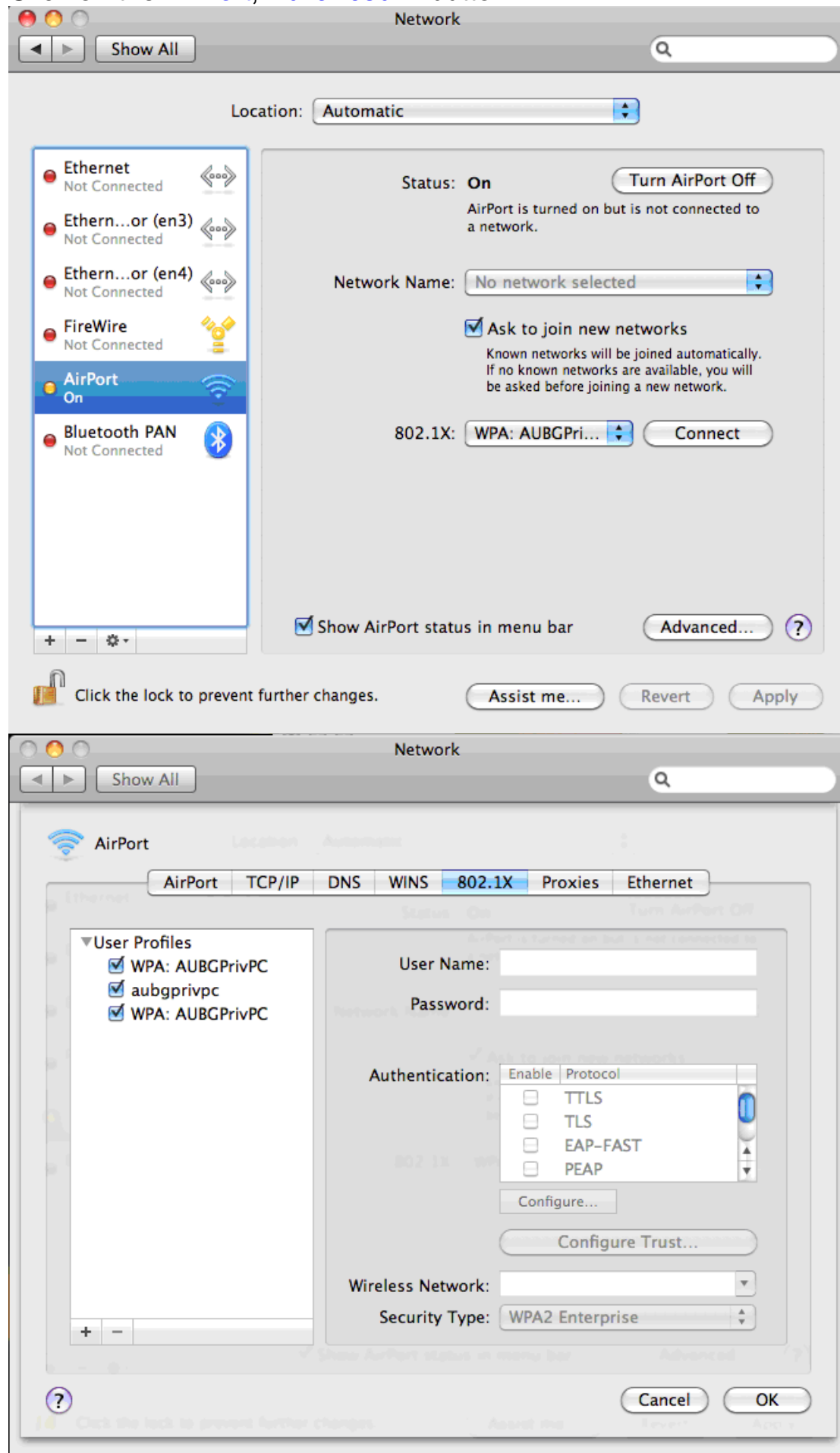
Click on [System Preferences...](#)



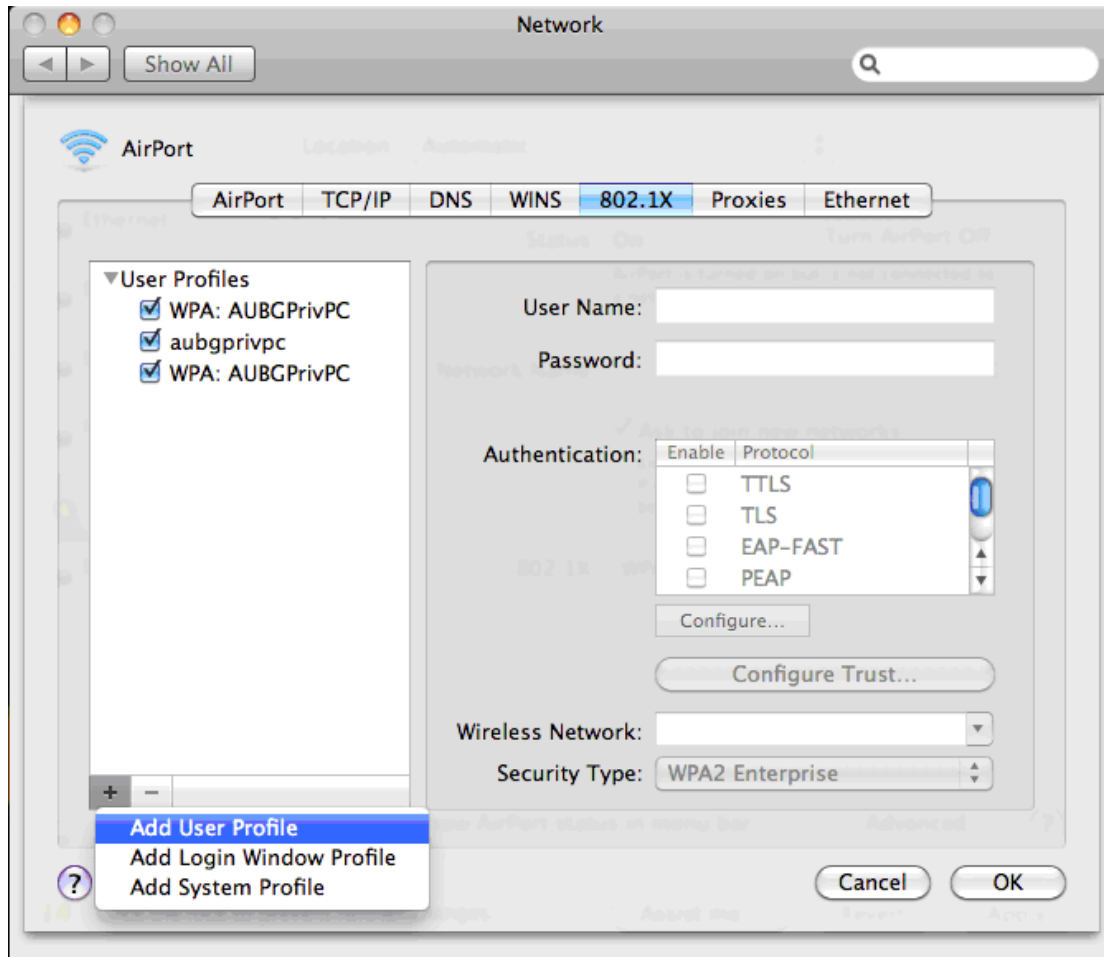
Click on [Network](#).



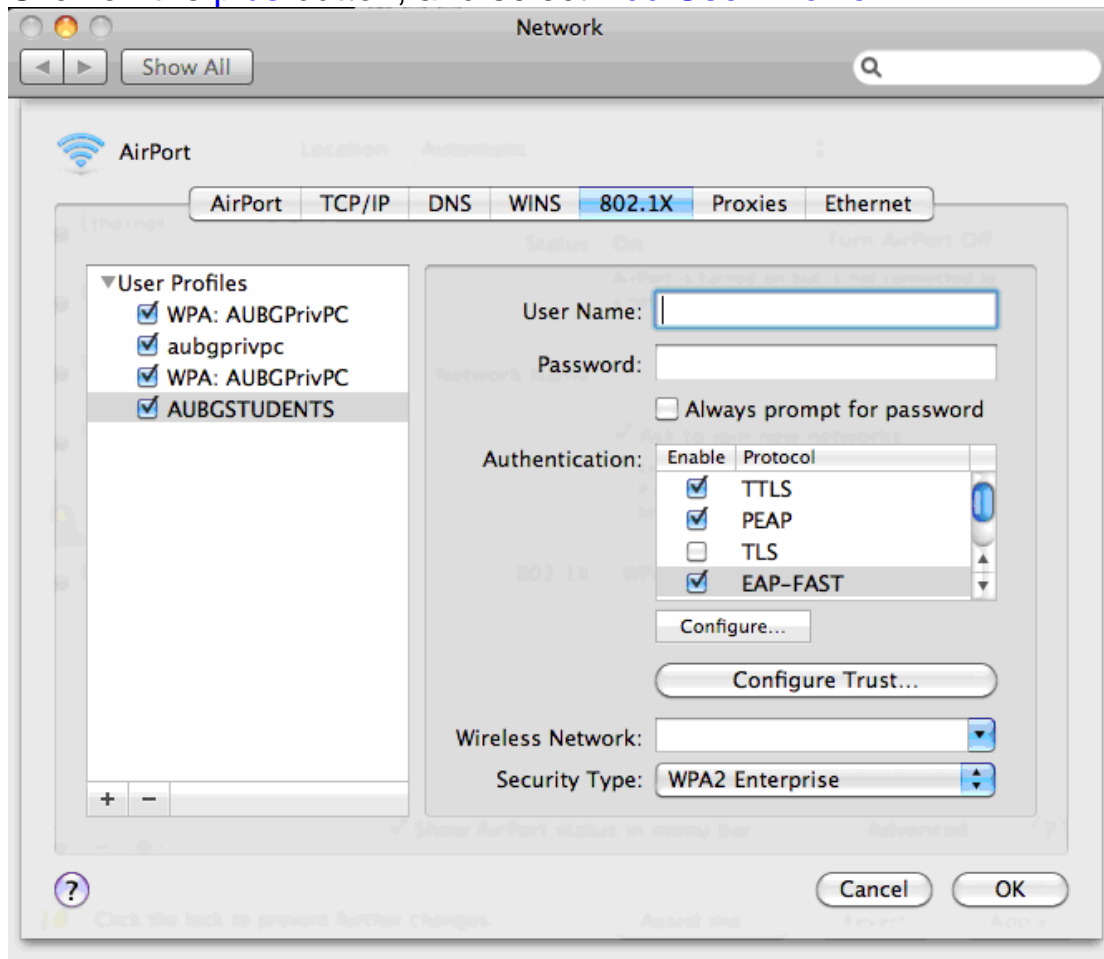
Click on the [AirPort, Advanced...](#) button.



Click on the [802.1X](#) tab



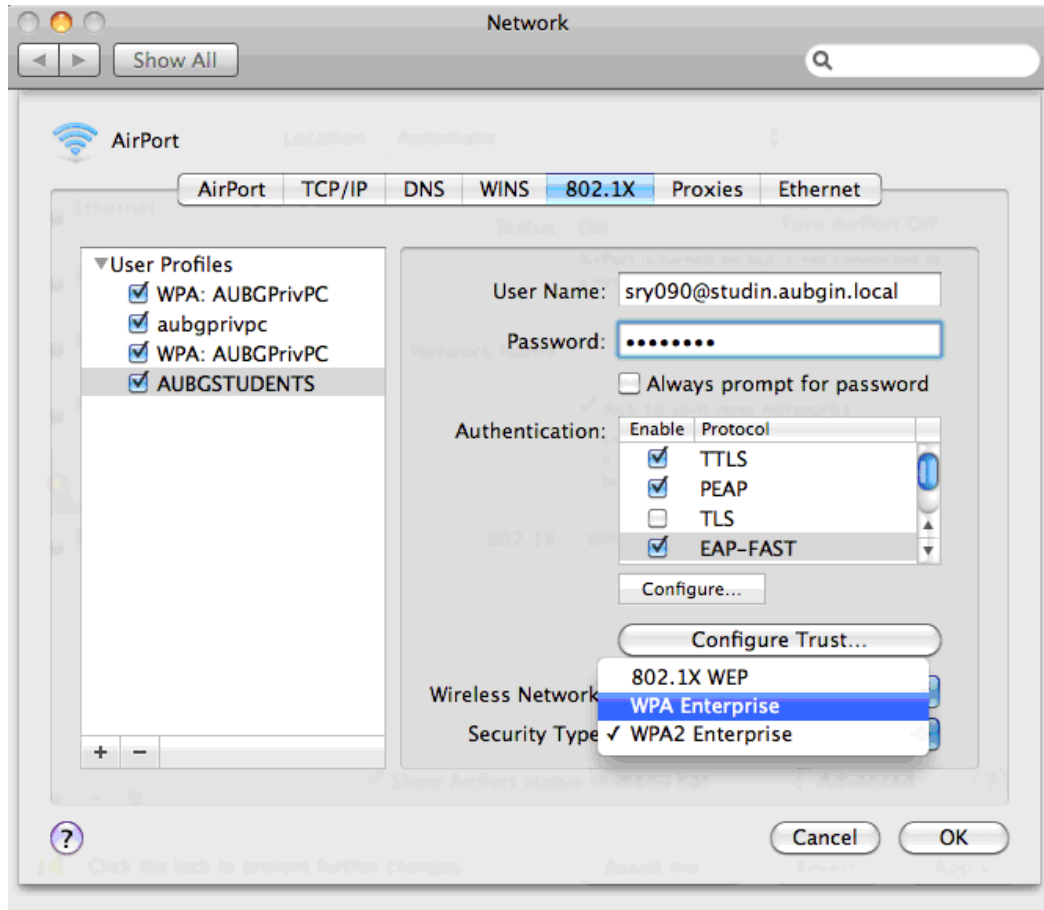
Click on the [plus](#) button, and select [Add User Profile](#)



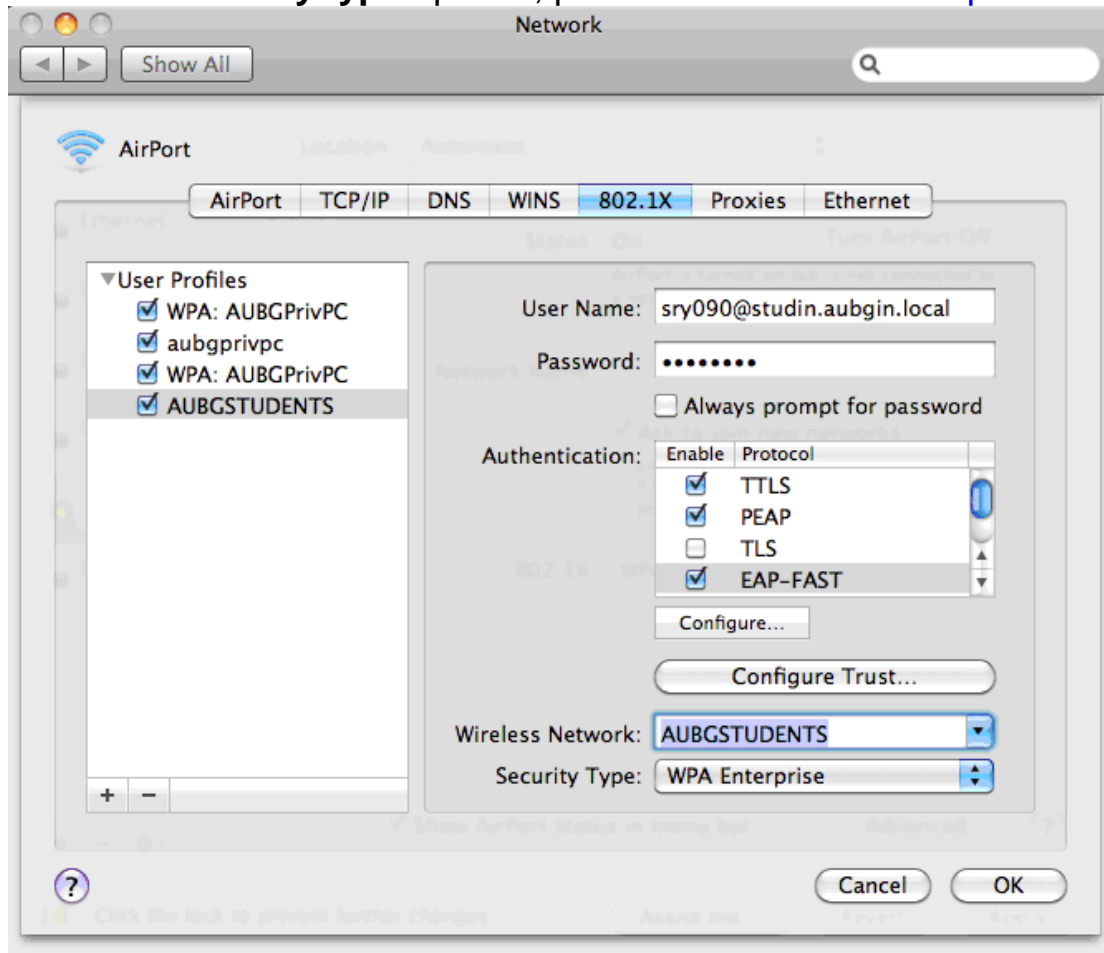
Type the name of the profile [AUBGSTUDENTS](#)

Type your User Name `user_name@studin.aubgin.local` and your Password

Check **EAP-FAST** check box

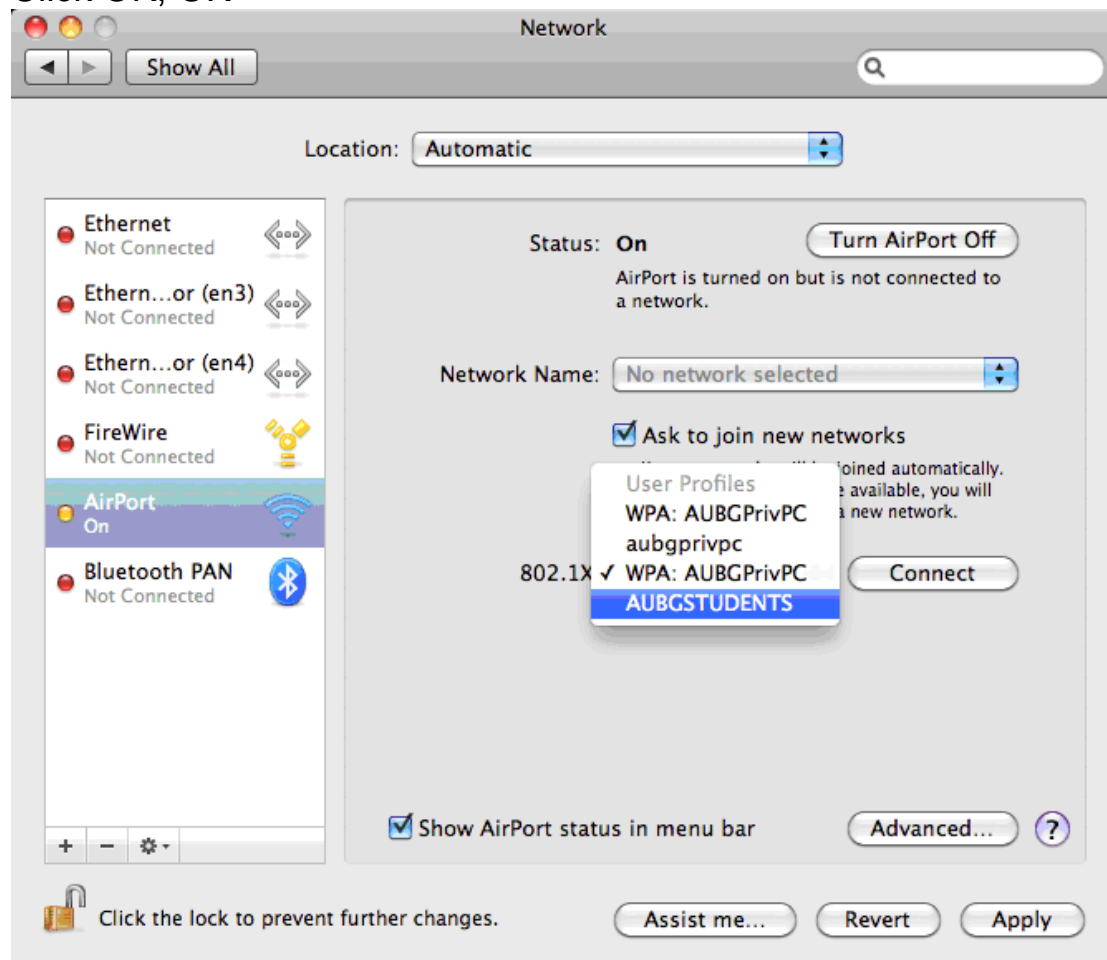


From the **Security type** options, please select **WPA Enterprise**

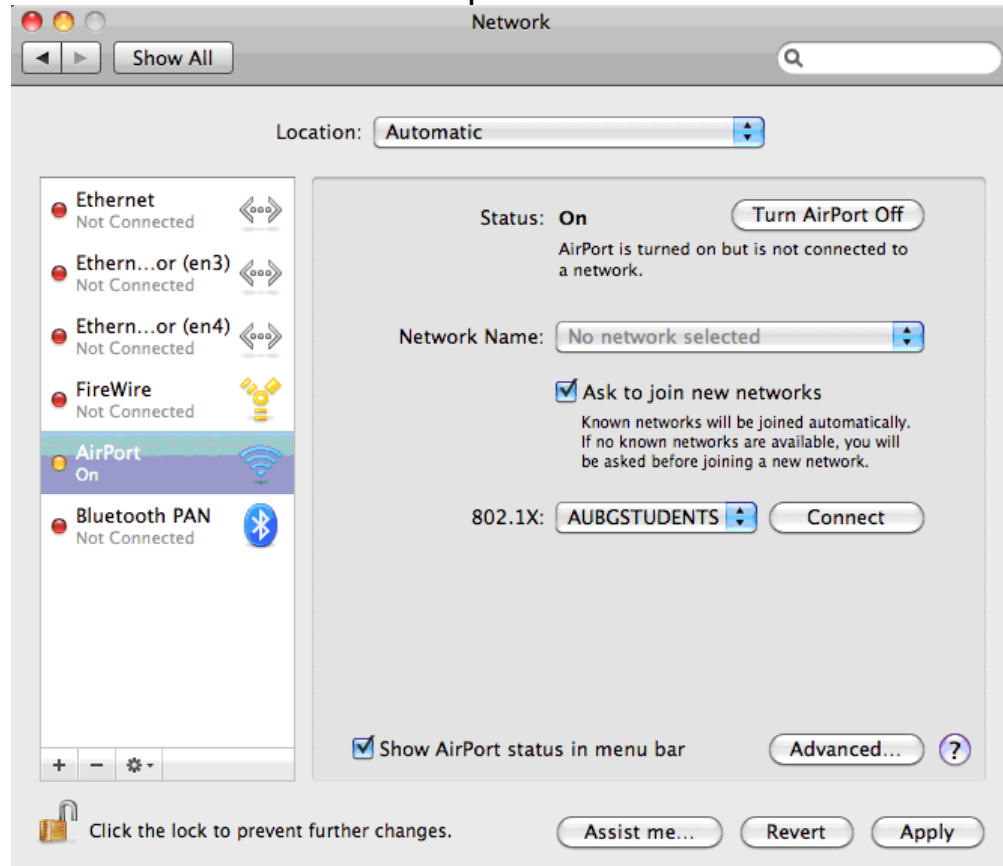


From the **Wireless network** options, please select **AUBGSTUDENTS**

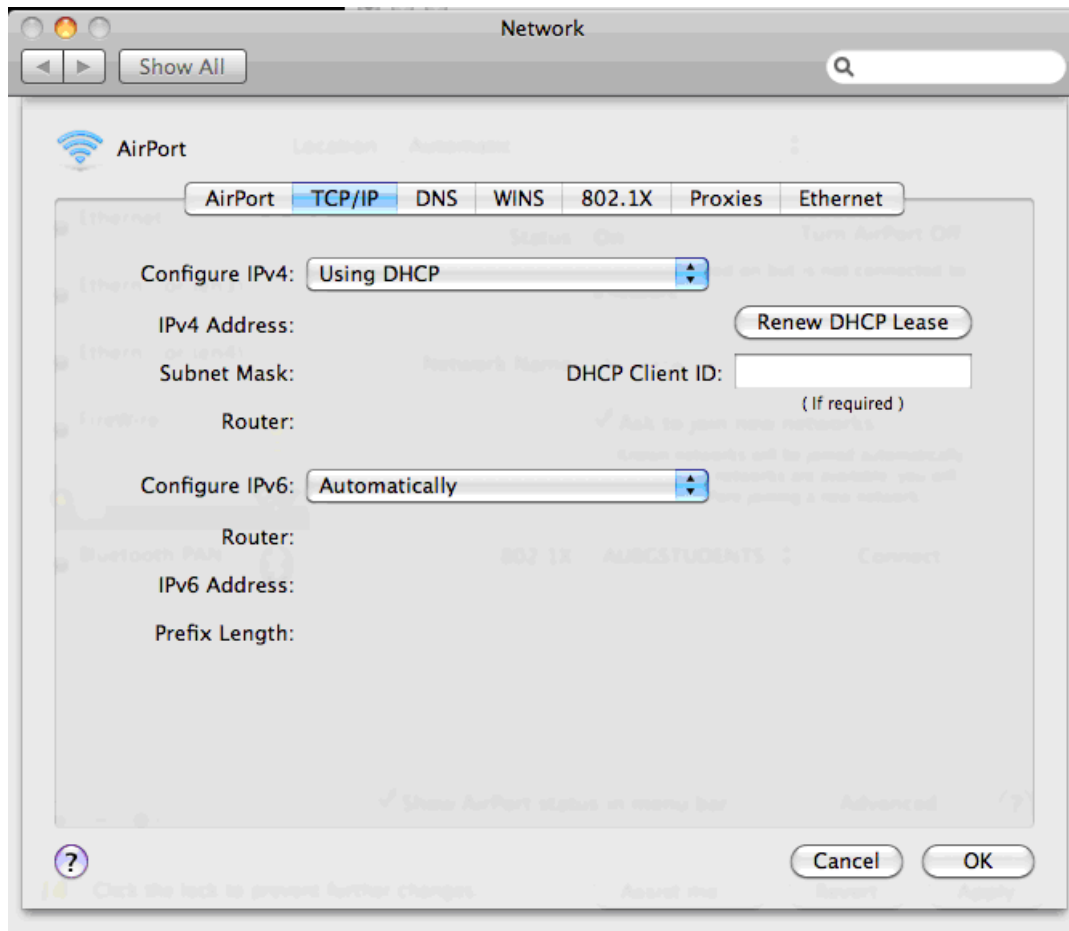
Click OK, OK



Choose **AUBGSTUDENTS** profile and click the **Connect** button



Be sure that your computer is configured in order to obtain an IP address from the DHCP server



If you would like to connect your computer to a cable connection, connect the cable, click on Ethernet, choose **AUBGSTUDENTS** profile and click **Connect**.

