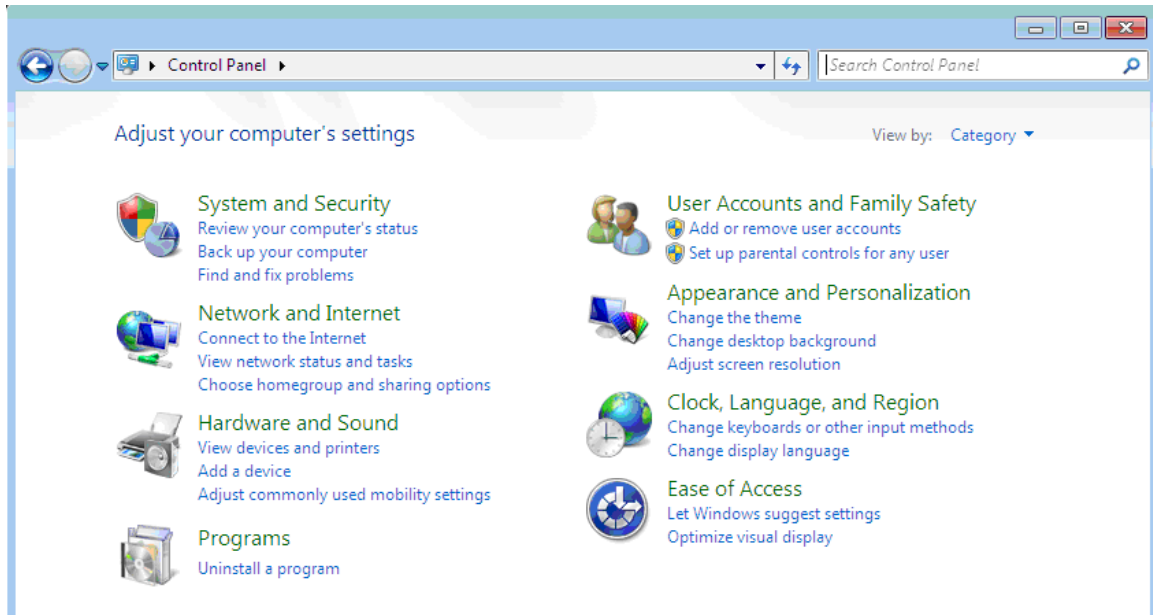
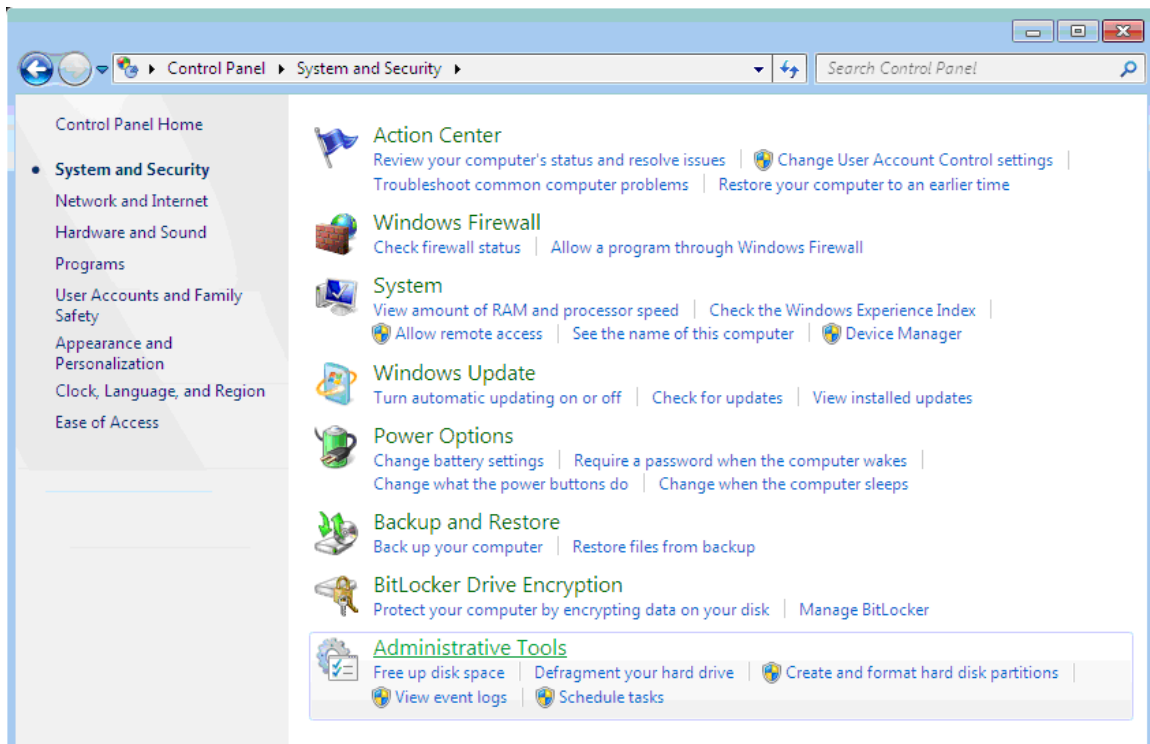


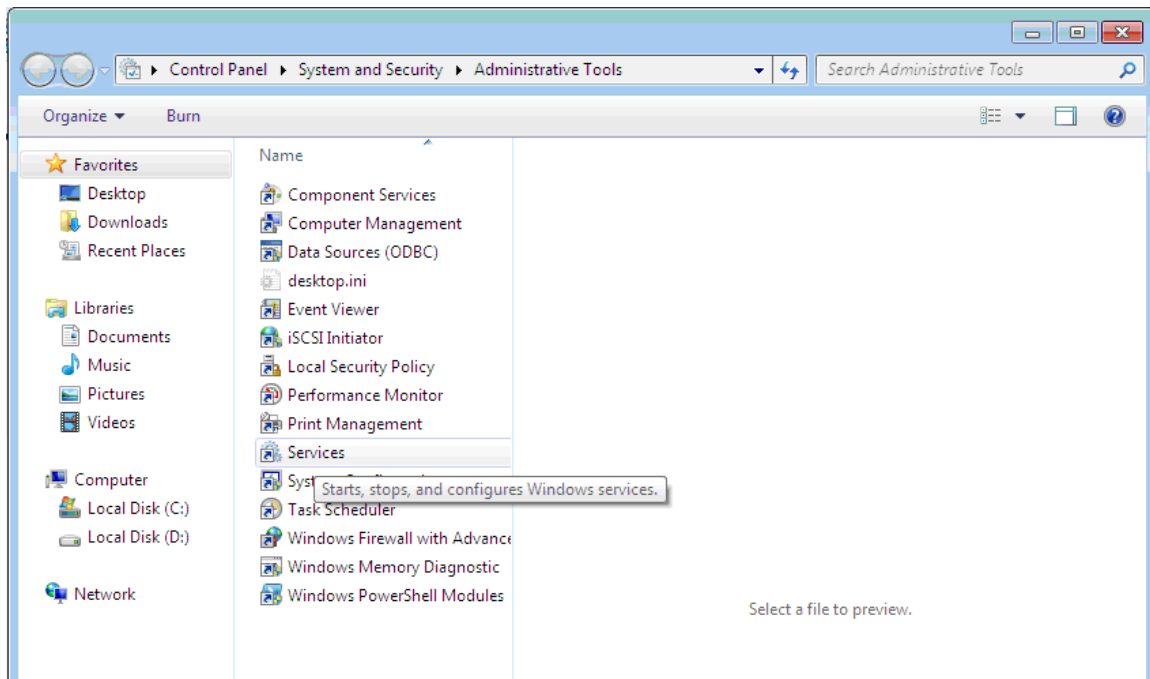
Click on **Start/Control Panel/System and Security**.



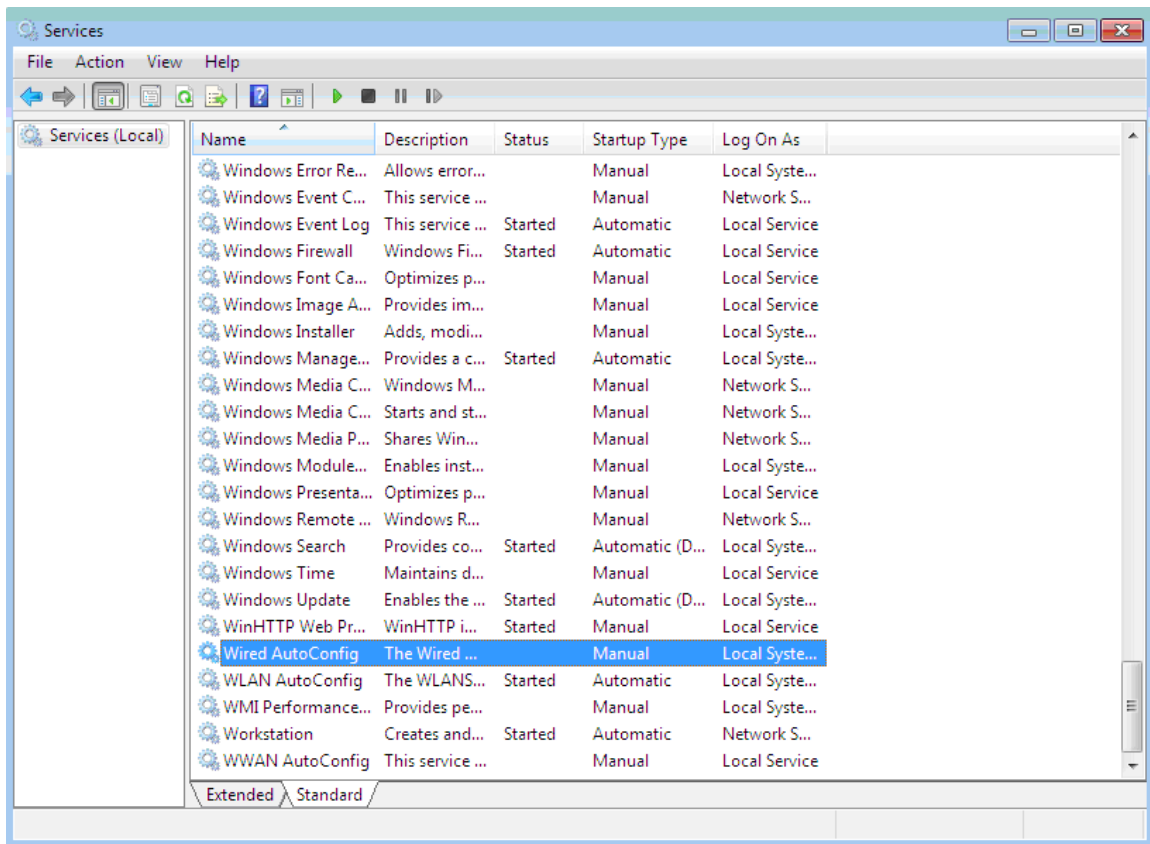
Click on **Administrative Tools**.



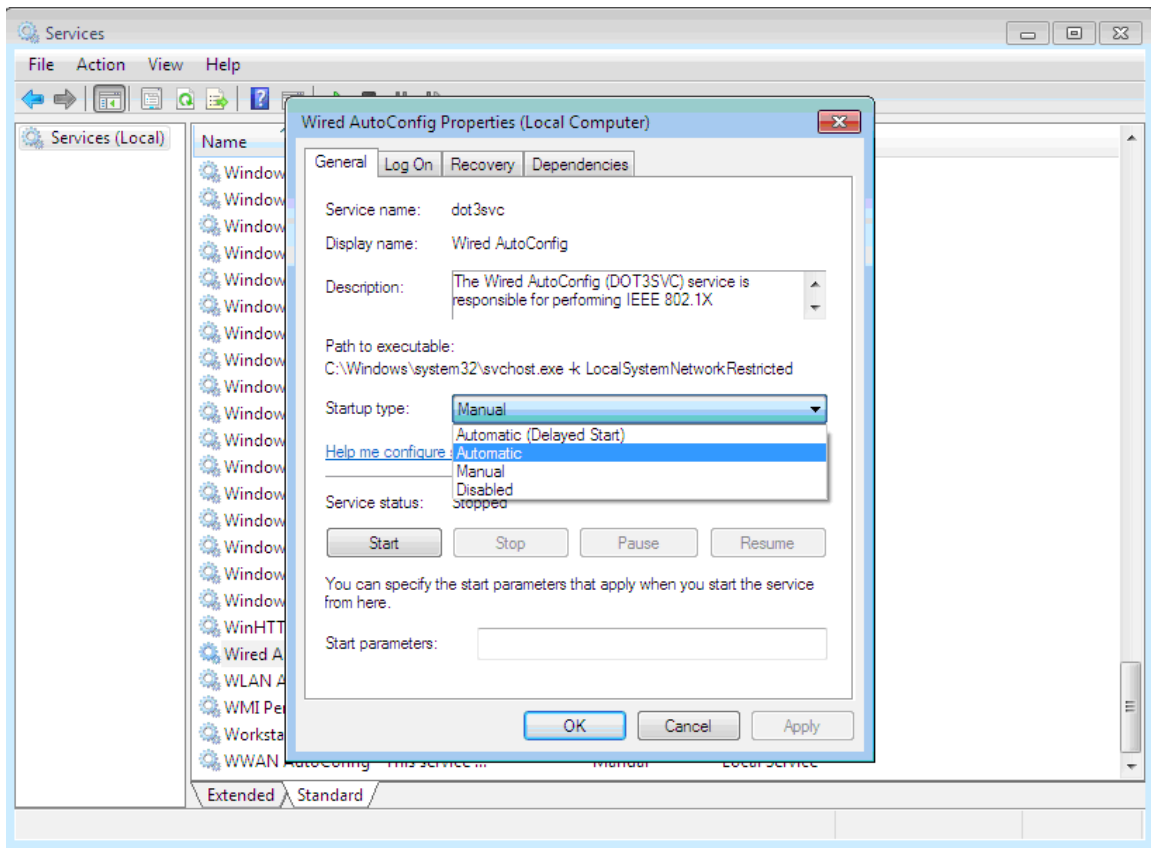
Double click – **Services**.



Double click – **Wired AutoConfig**.

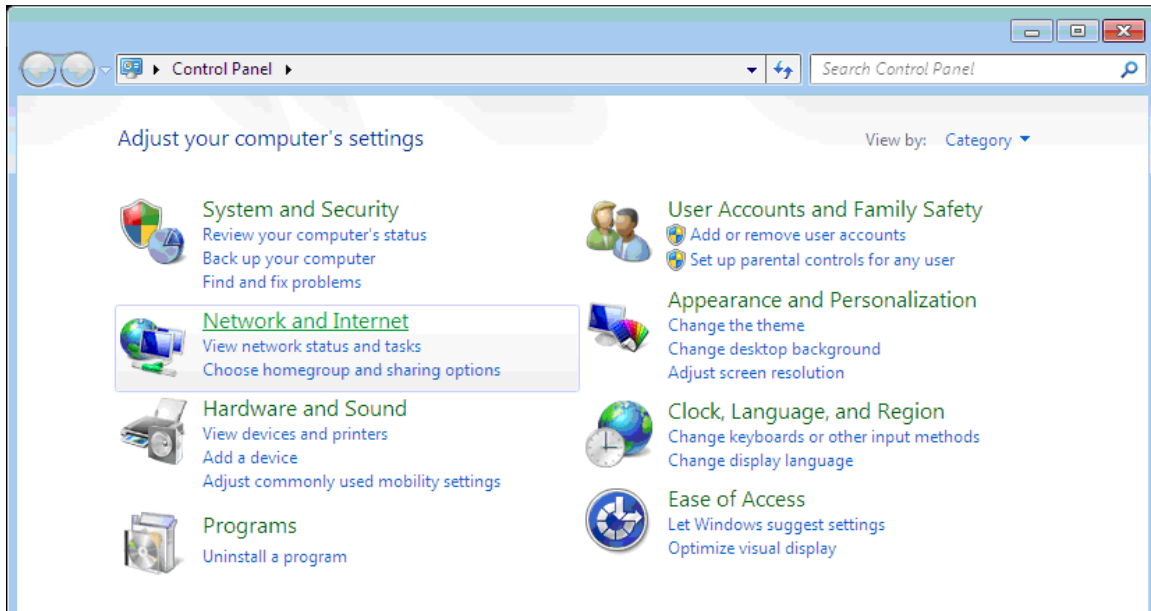


Change Startup type to **Automatic** and click on **Start** Button.

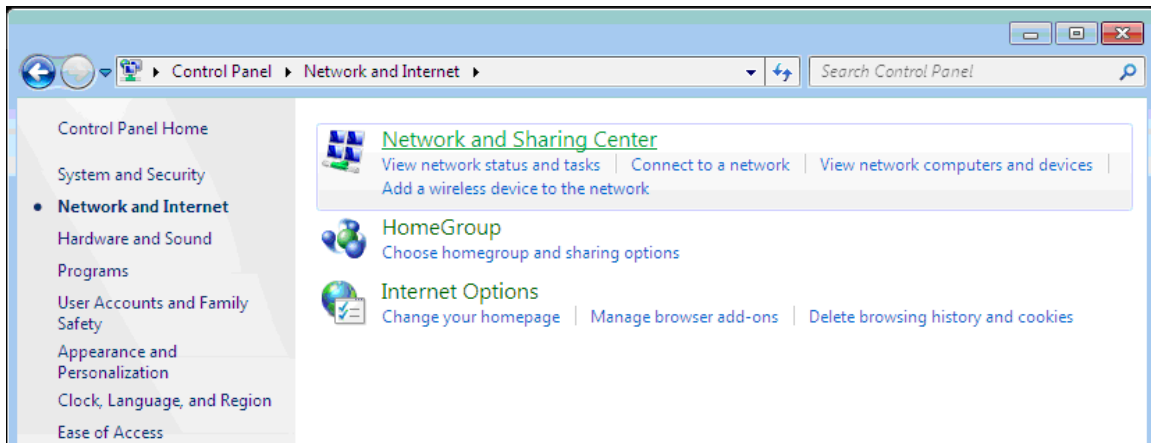


Click **Apply**, **OK**.

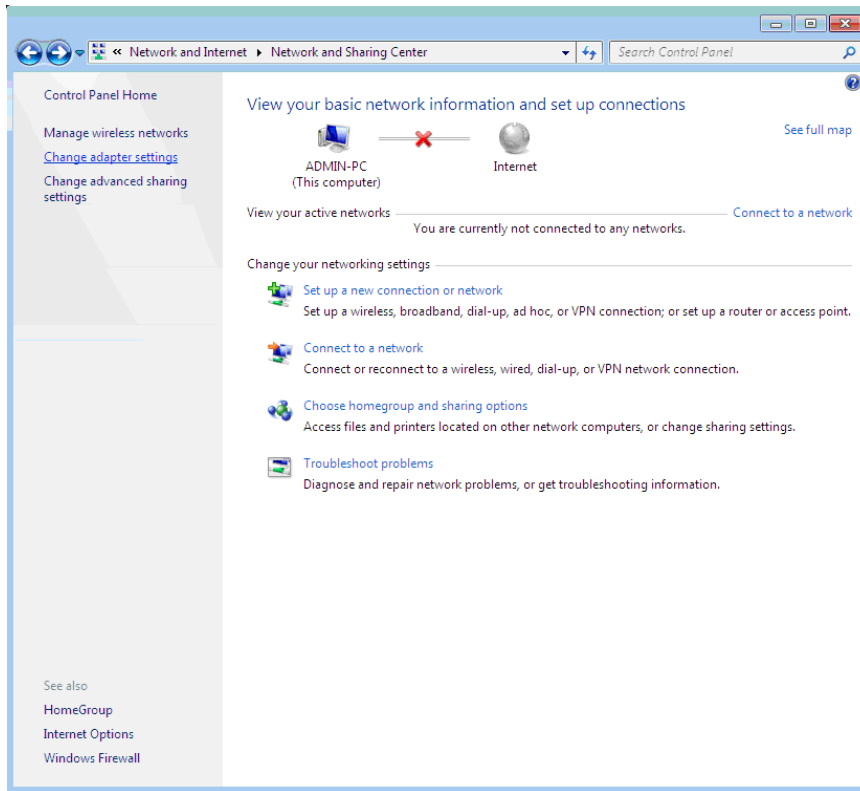
Click on [Start / Control panel / Network and Internet](#).



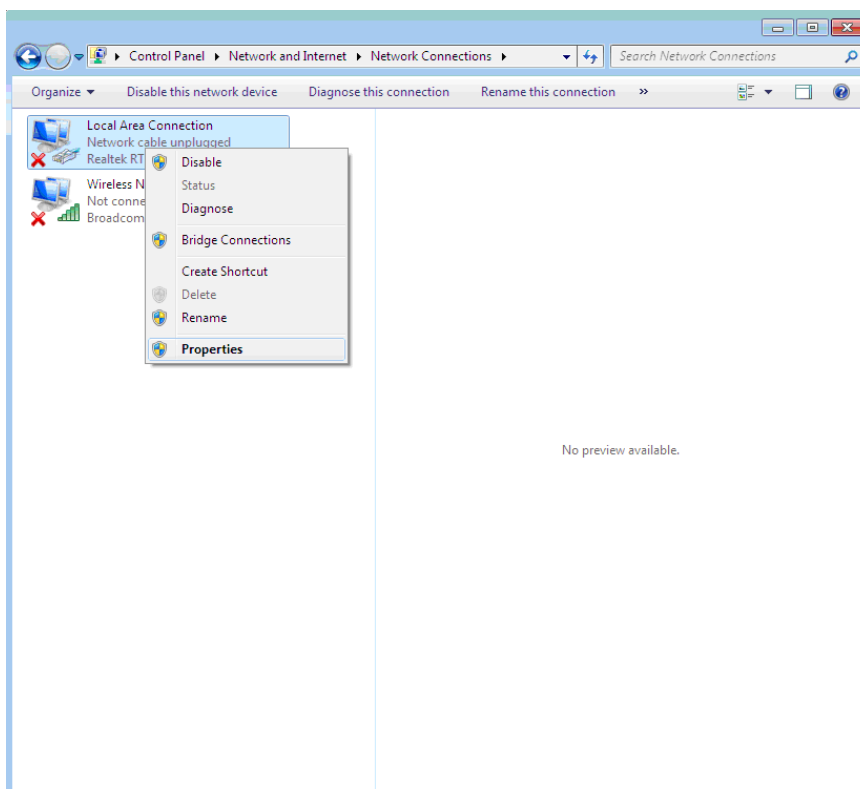
Click on [Network and Sharing Center](#).



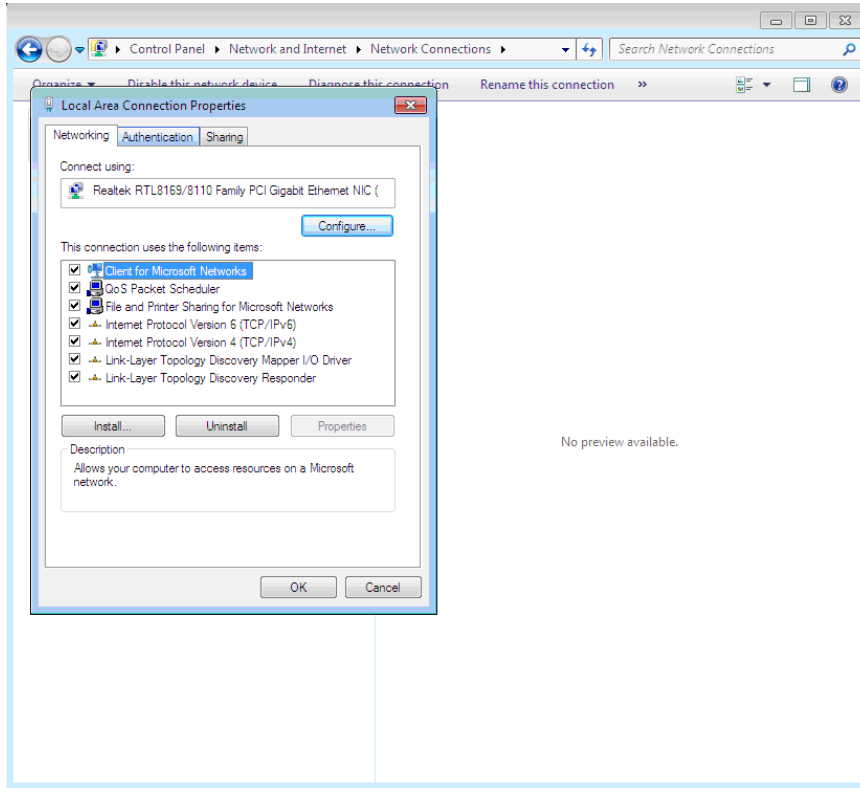
Click on [Change adapter settings](#).



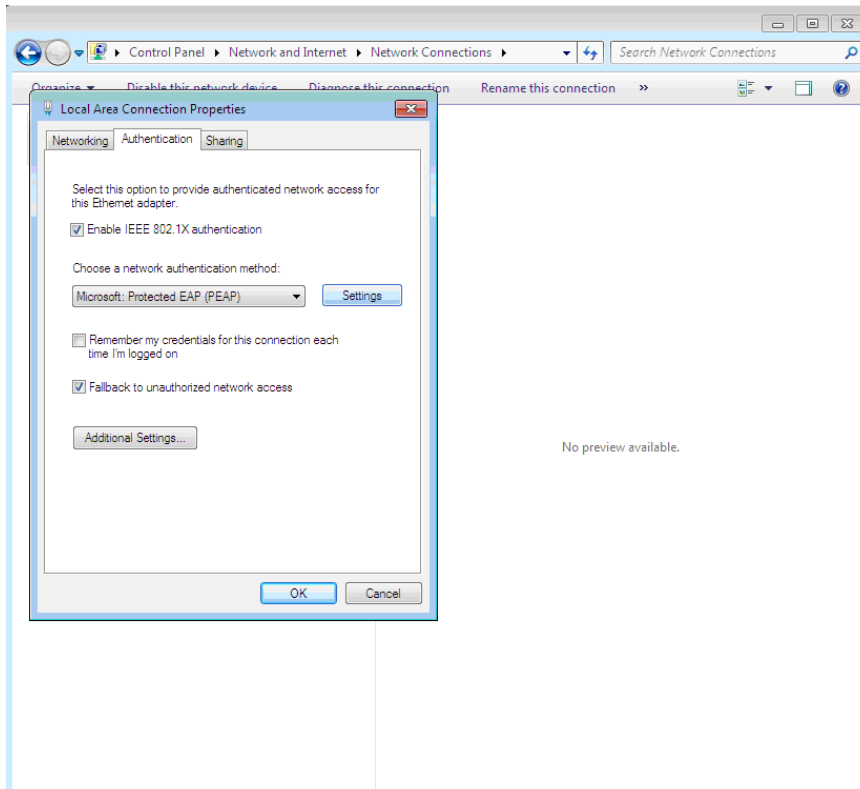
Right click on [Local area connection](#) icon, choose [Properties](#)



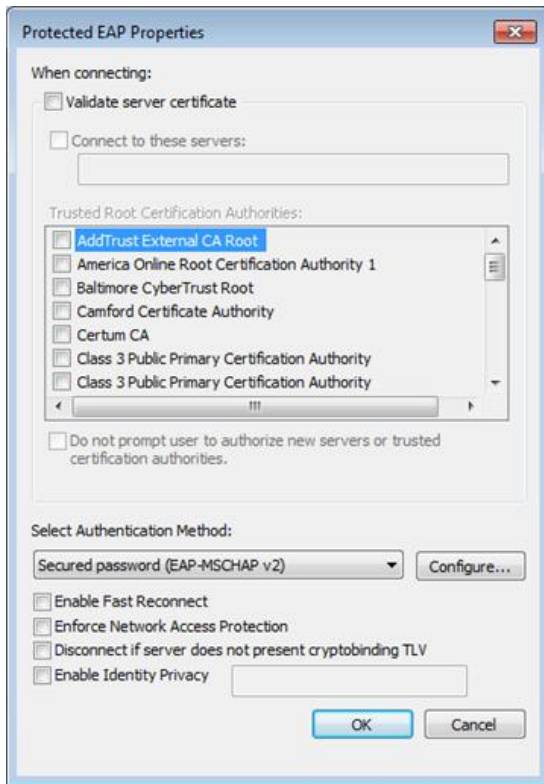
Click on the **Authentication** tab.



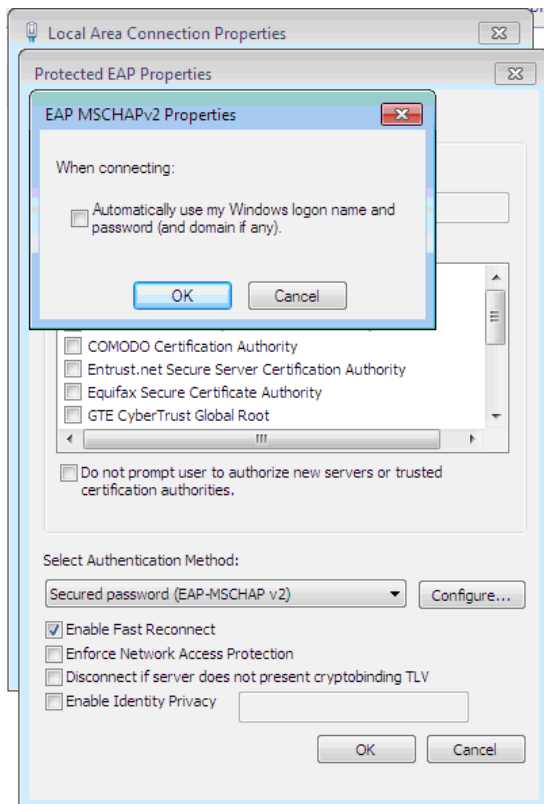
Click on the **Settings** button.



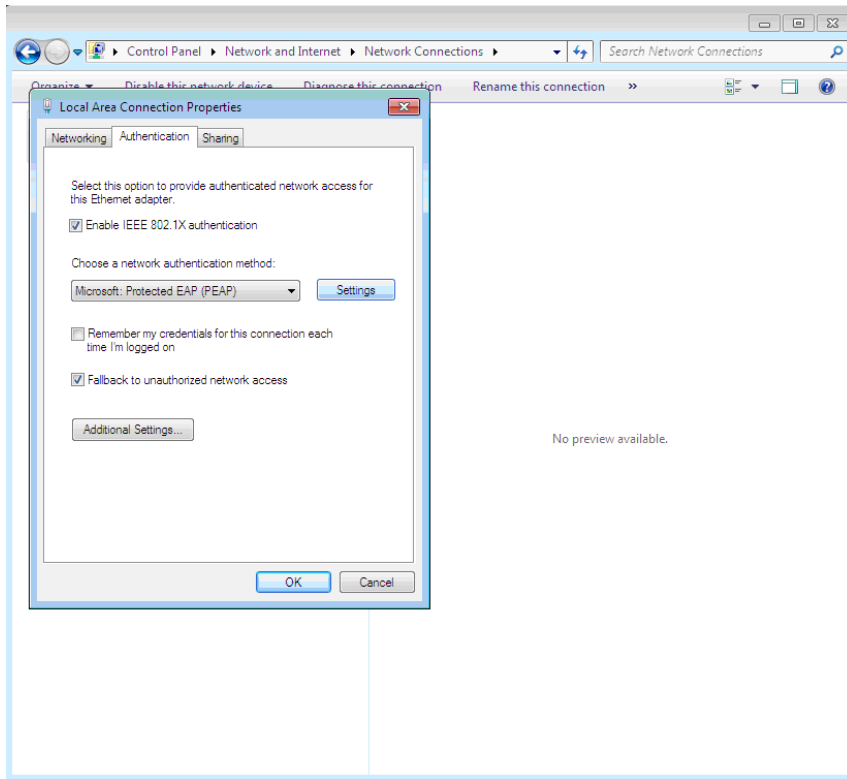
Change the settings as it is shown on the next screenshot and click on [Configure](#) button.



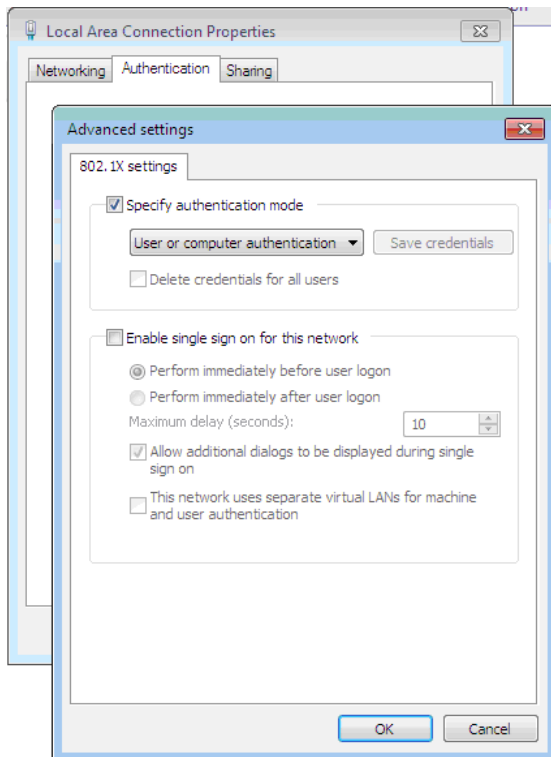
Clear the check box, if it is necessary and click [OK](#).



Click on the **OK** button and click **OK** again.
Select the **Additional settings** button.

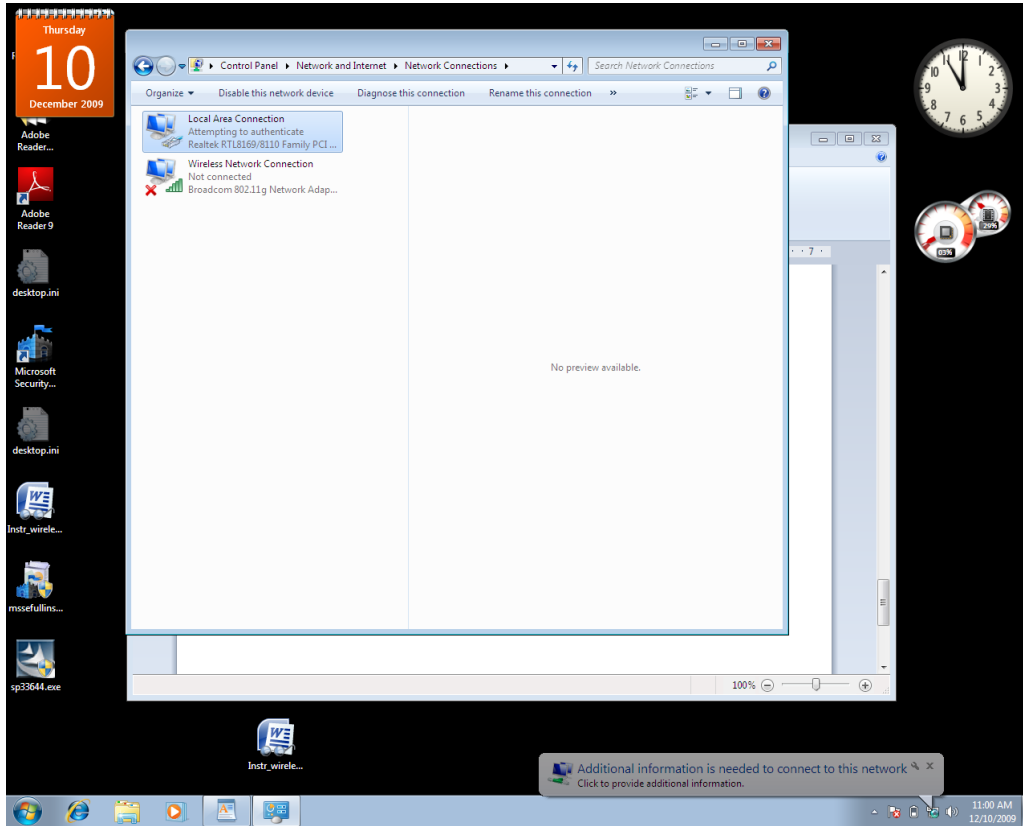


Check **Specify authentication mode** and choose **User or computer authentication**.



Click **OK**, **OK**.

Click on the **balloon** in the right corner.



Enter your **User name** and **Password** as it is shown below.

