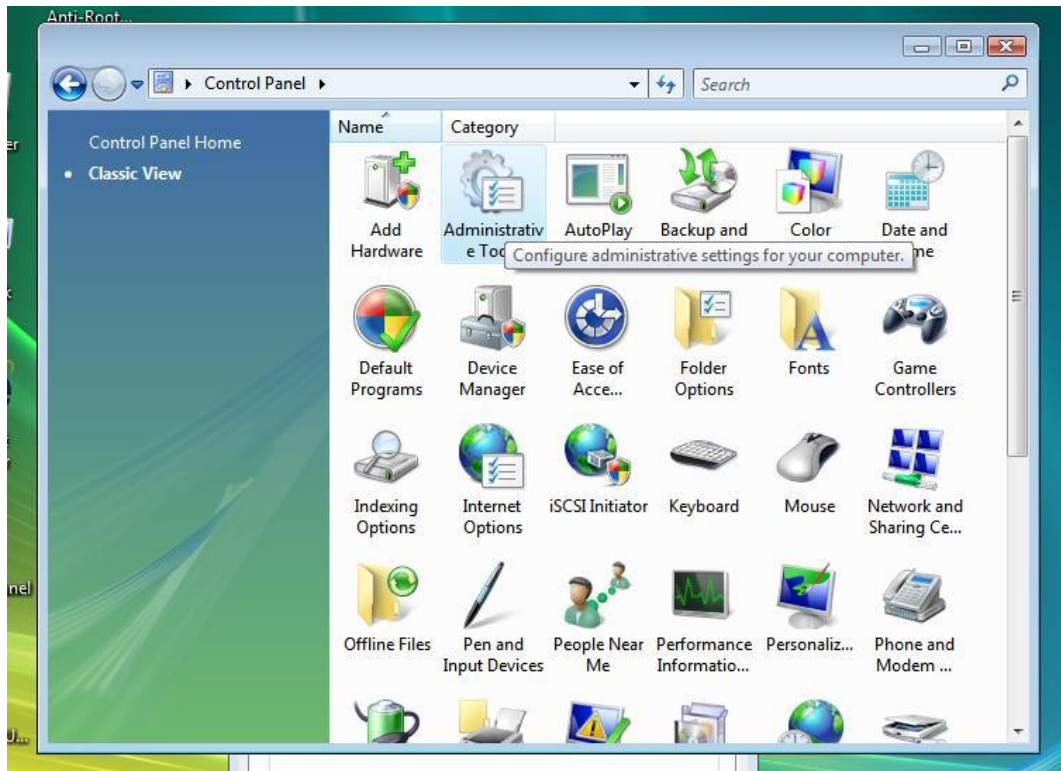
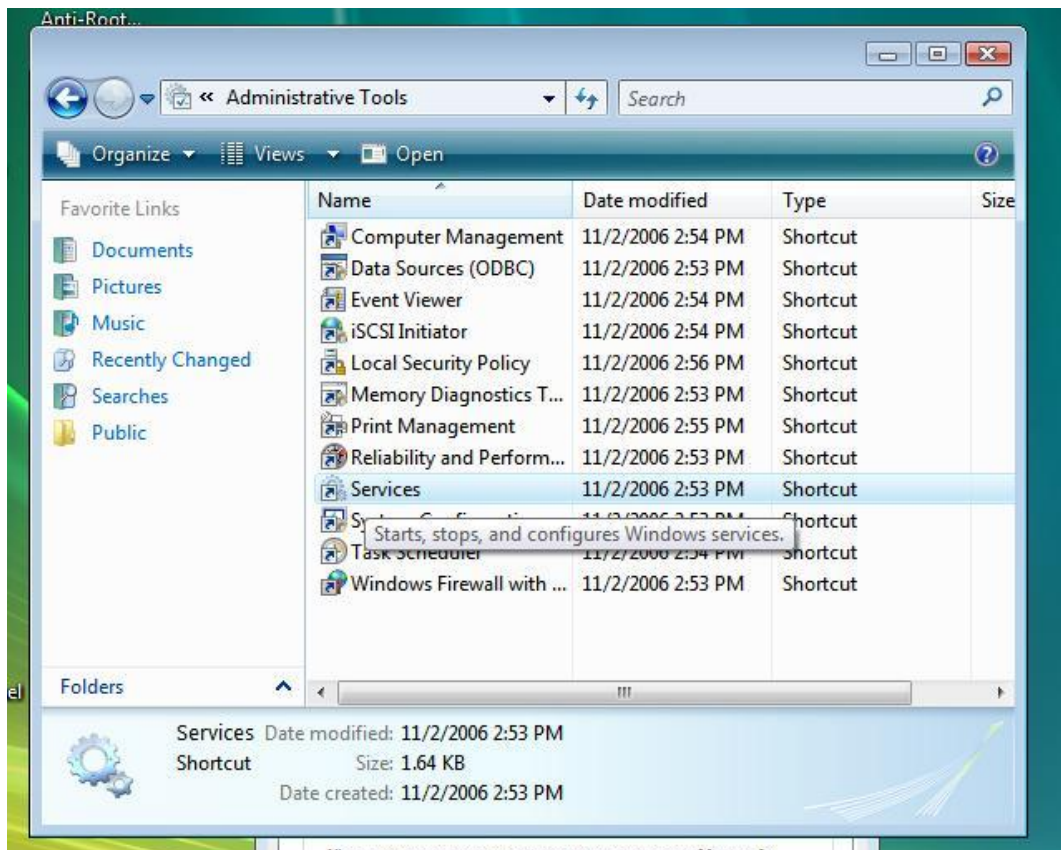


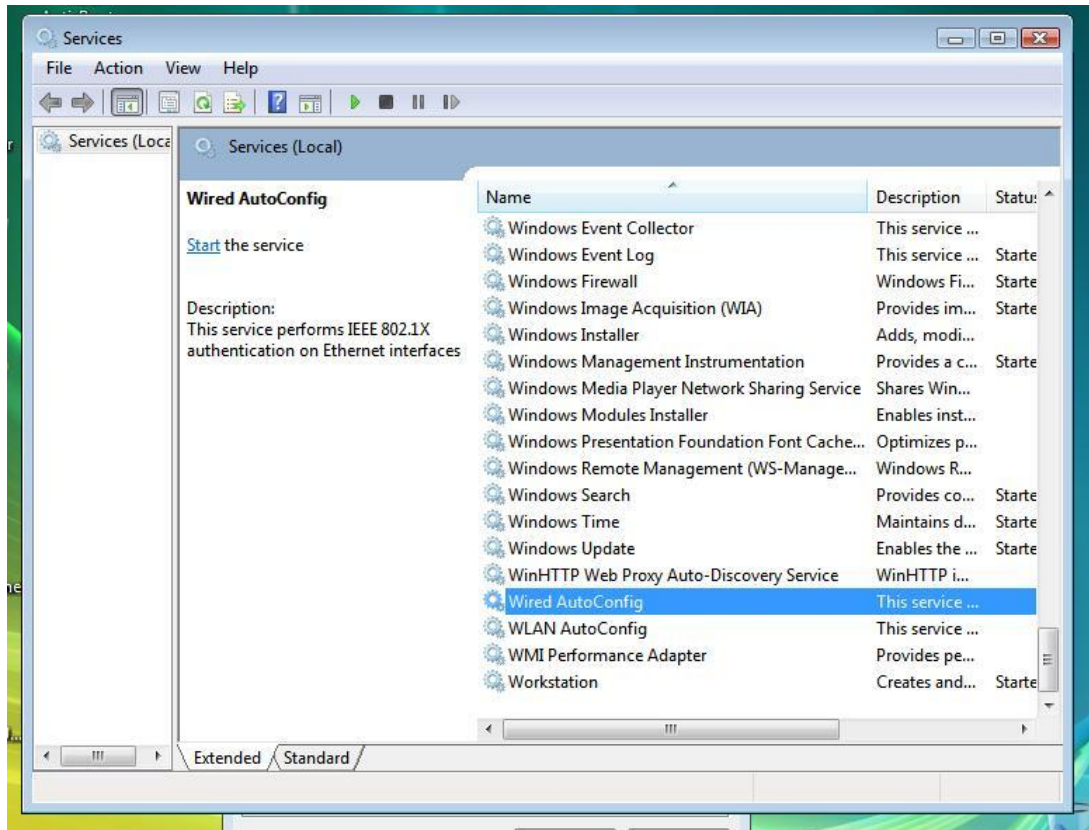
Click on Start/Settings/Control Panel/Administrative Tools



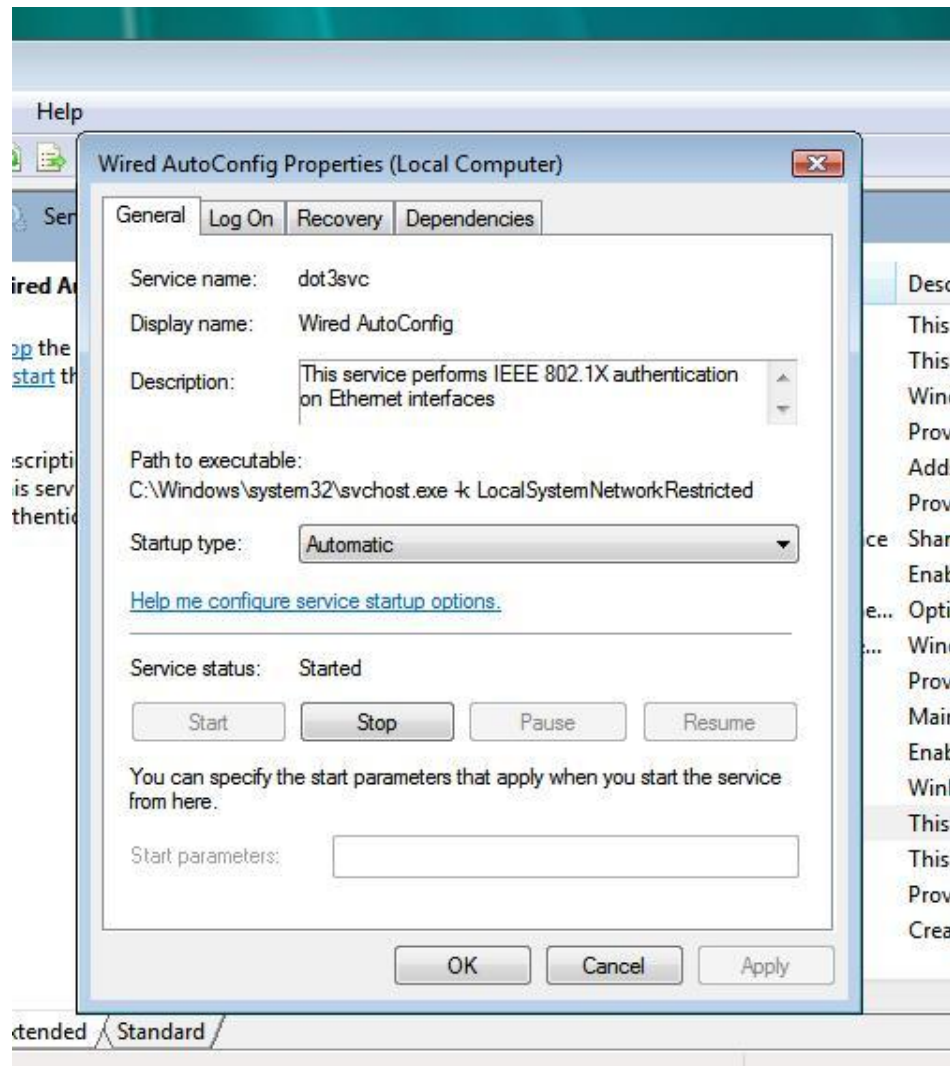
Double click - Services



Double click – **Wired AutoConfig**



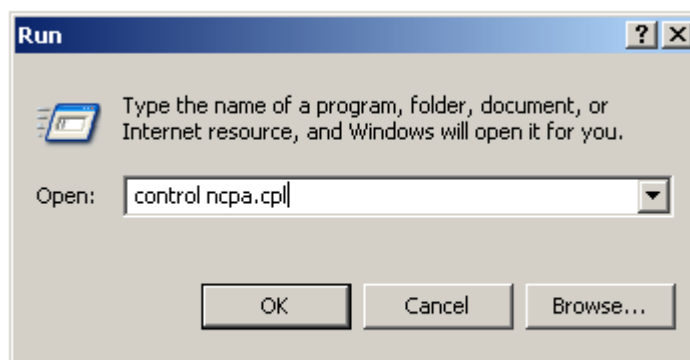
Change Startup type to **Automatic** and click on Start Button



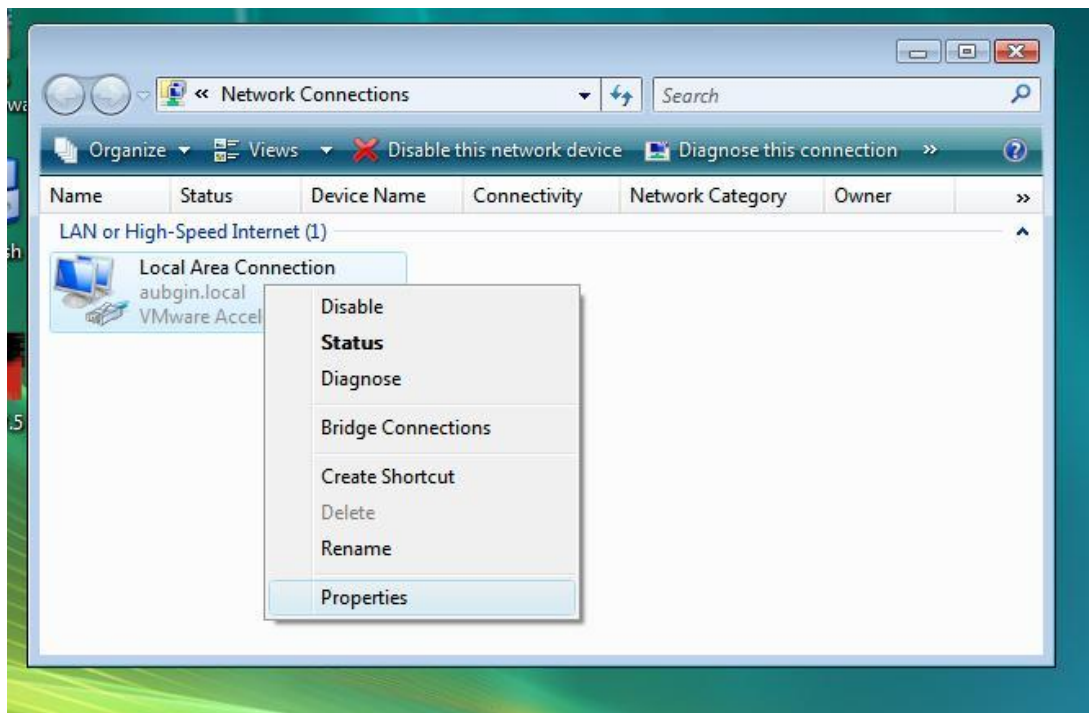
Click **OK**

Click on Start/All Programs/Accessories/Run

Type **control ncpa.cpl** and press OK

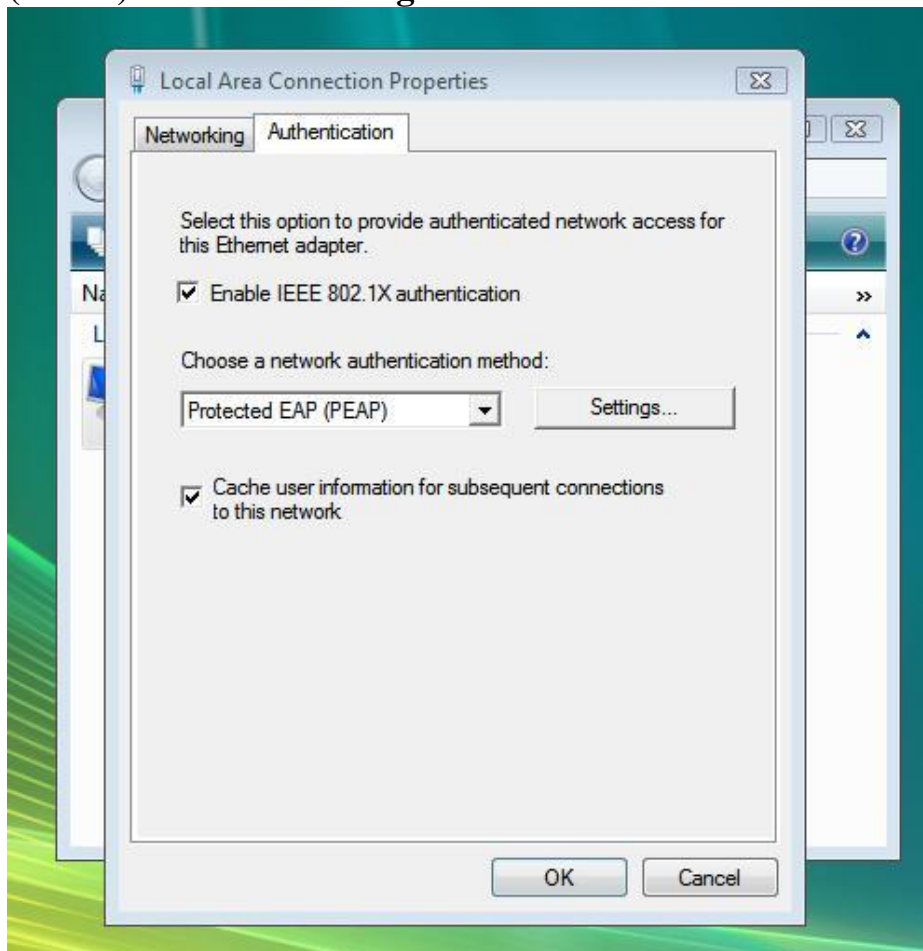


Click on Local Area Connection, using the right button and select Properties.

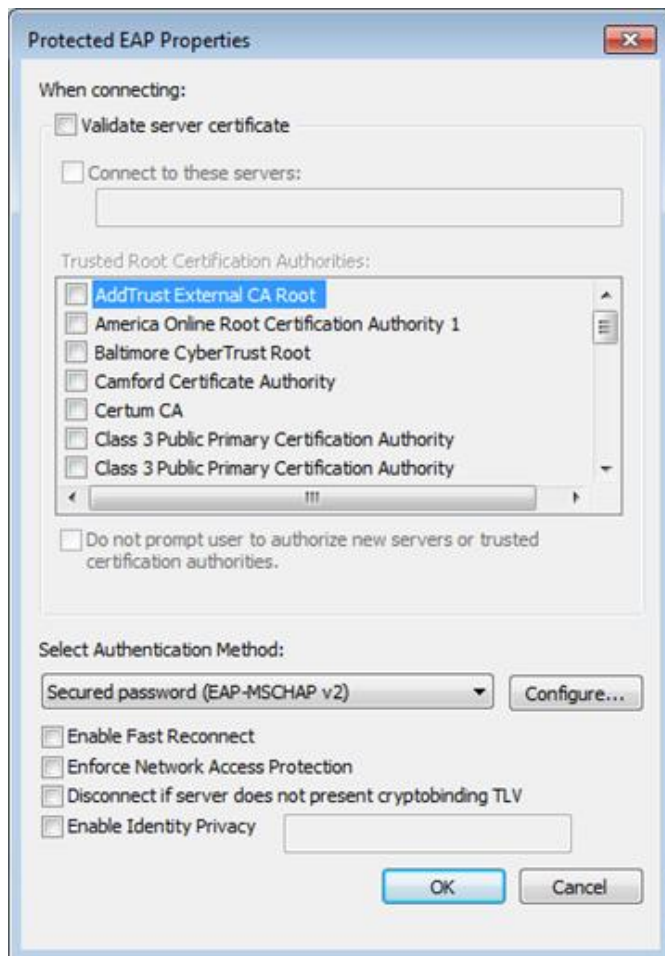


Click on the **Authentication** tab

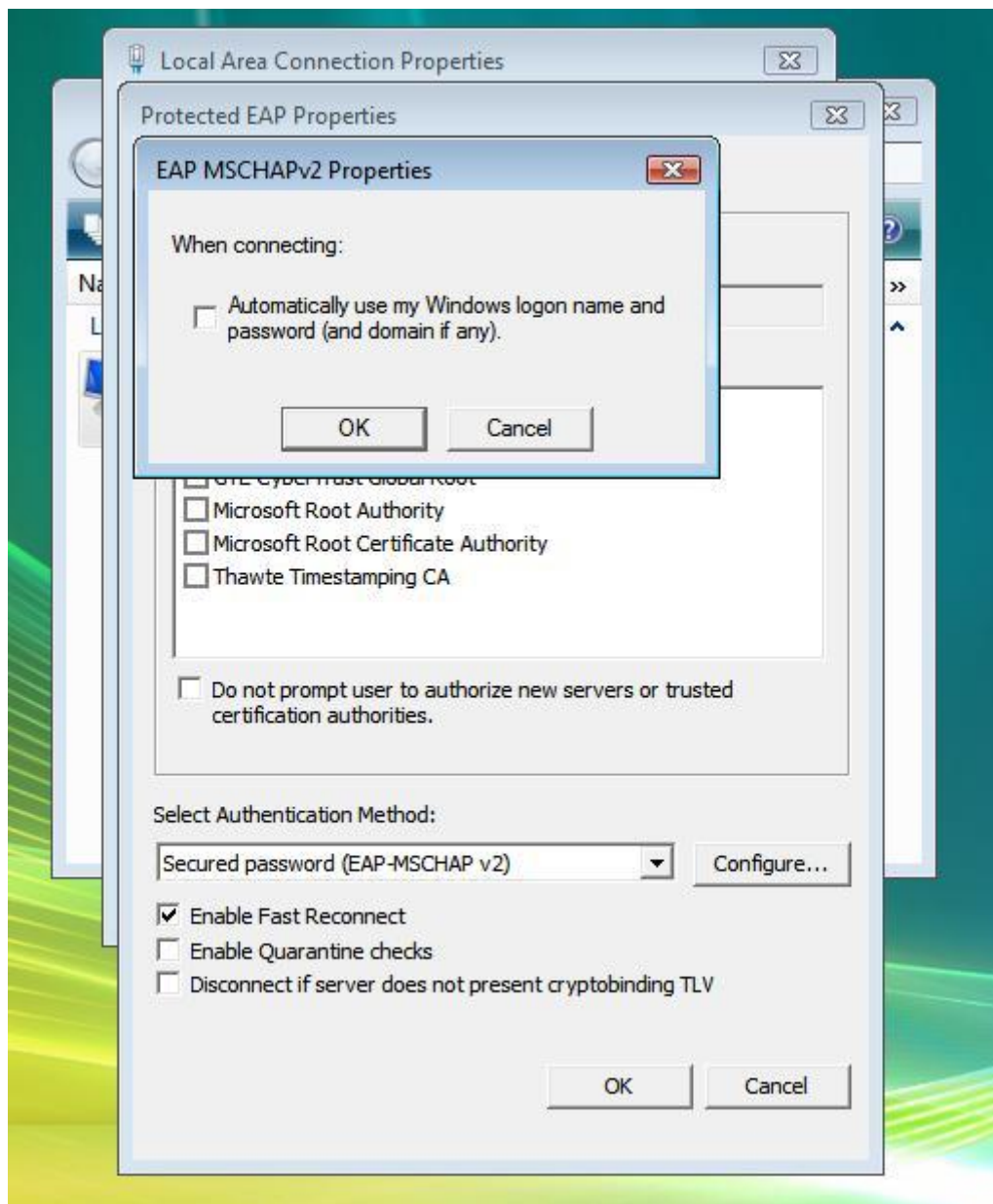
For **Choose a network authentication method** choose **Protected EAP (PEAP)** and click on **Settings**



Change the settings as it is shown on the next screenshot and click on [Configure](#) button.



On the next screen **uncheck** **Automatically use my windows logon name and password** and click OK and OK and OK.



Connect network cable to your computer and wait. After the pop up network window appears, click on it.

On the next screen the system will offer you to enter your login name and password
<login name>@studin.aubgin.local ex: pni060@studin.aubgin.local
Password

Click OK
The network setup finished.