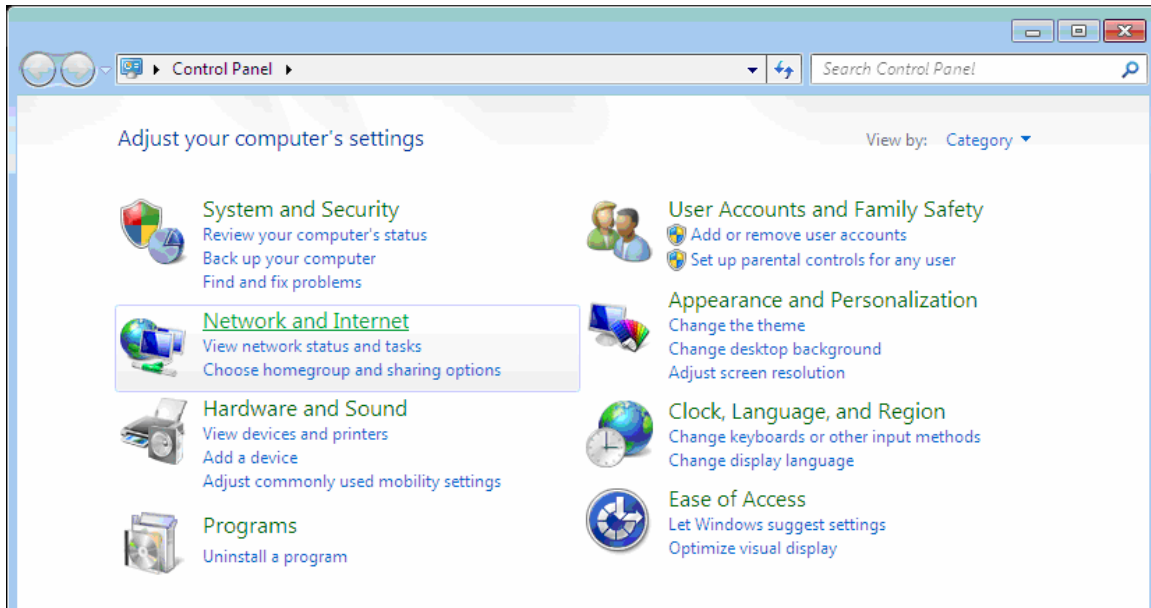
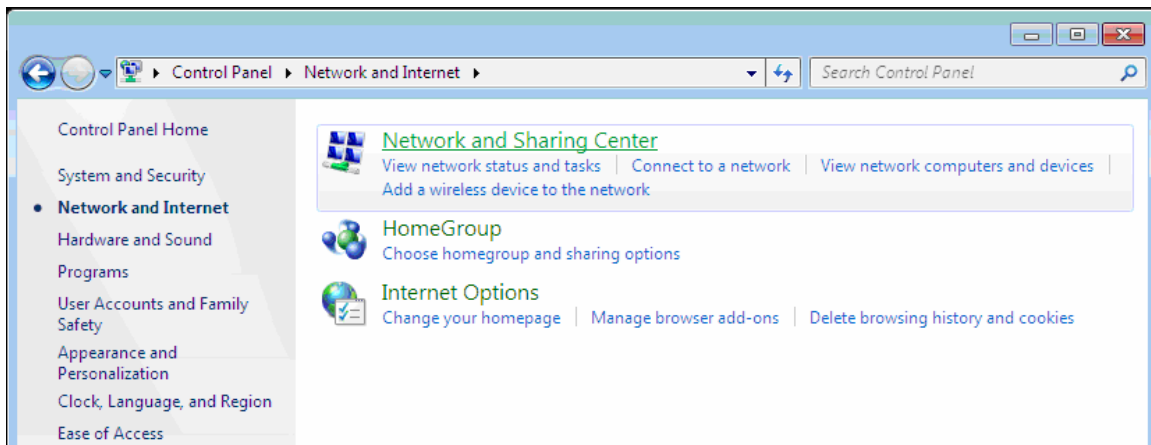


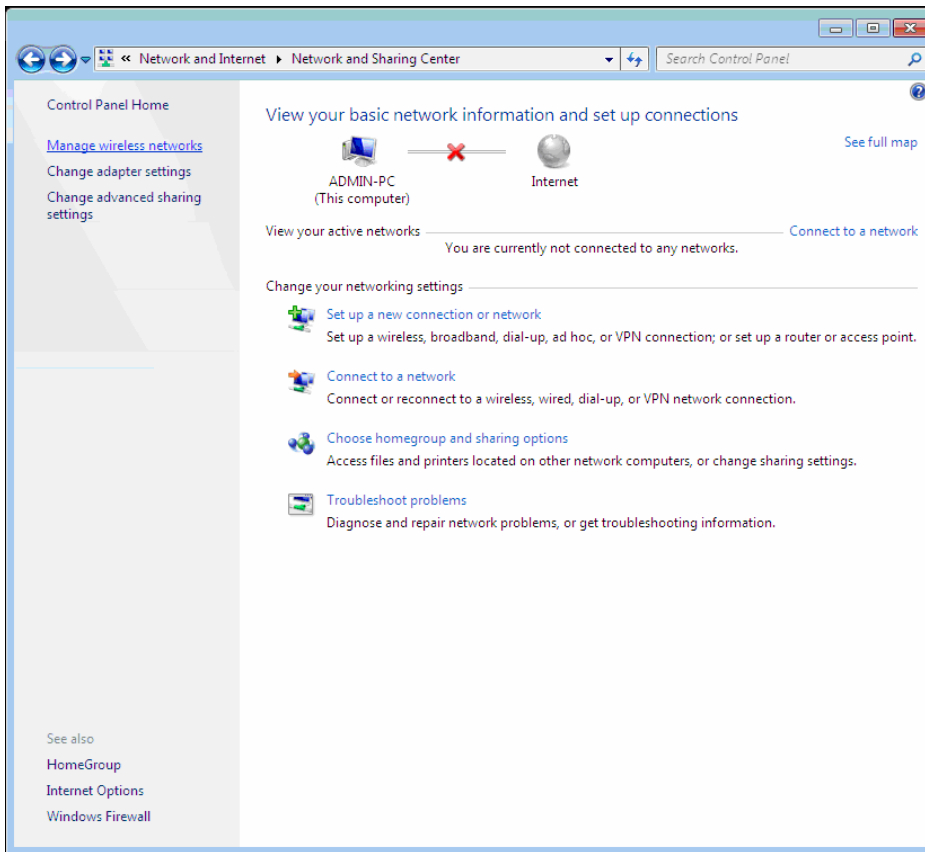
Click on [Start](#) / [Control panel](#) / [Network and Internet](#).



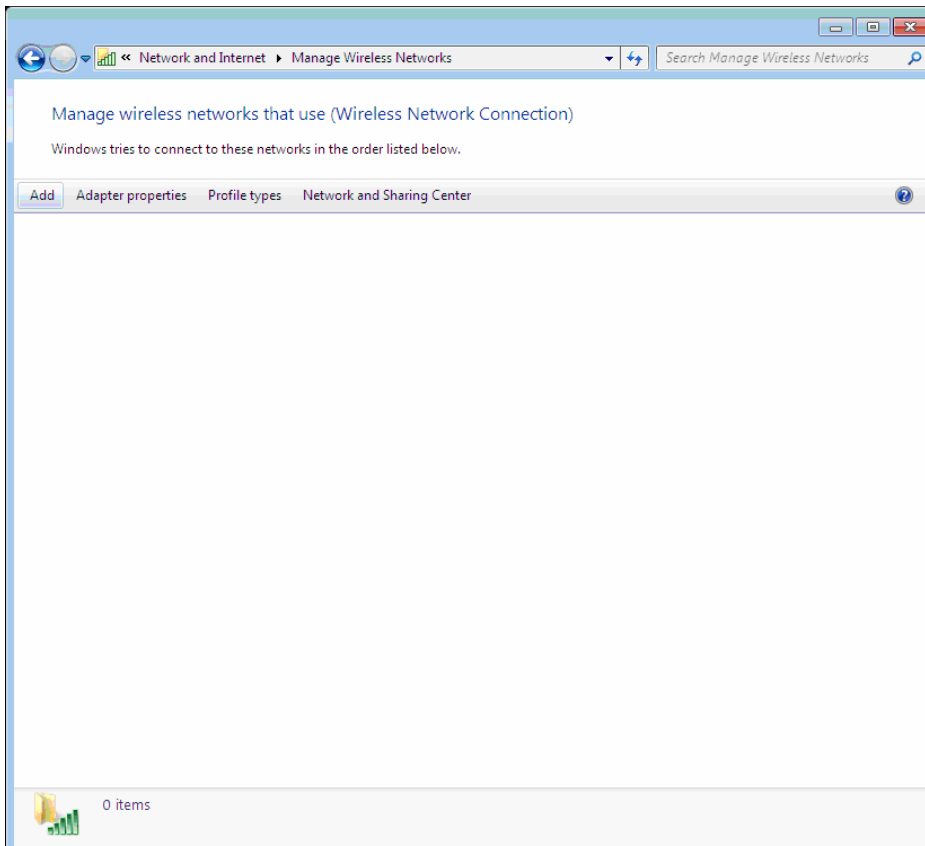
Click on [Network and Sharing Center](#).



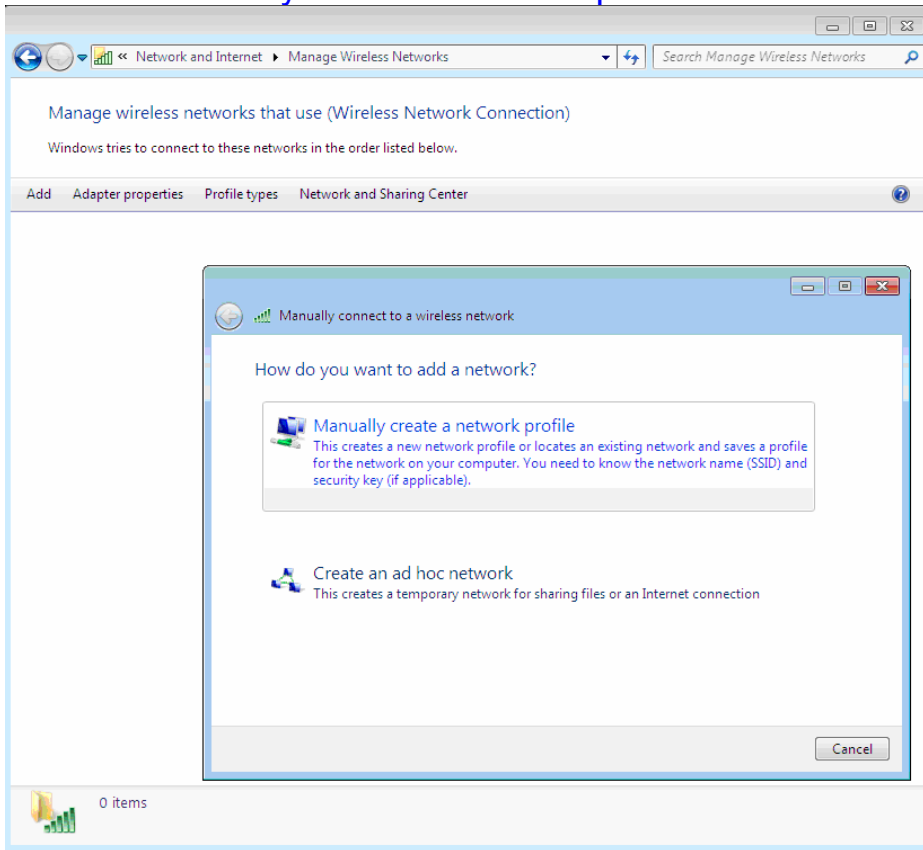
Click on **Manage wireless networks**.



Click on the **Add** button.



Click on **Manually create a network profile**.

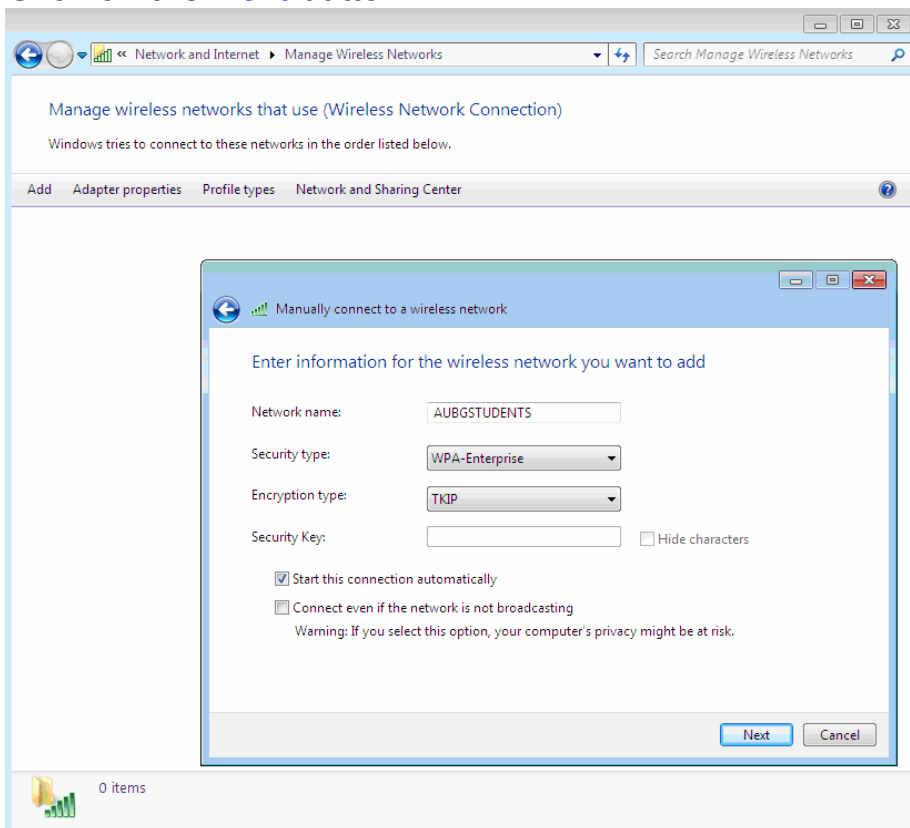


Type Network name: **AUBGSTUDENTS**

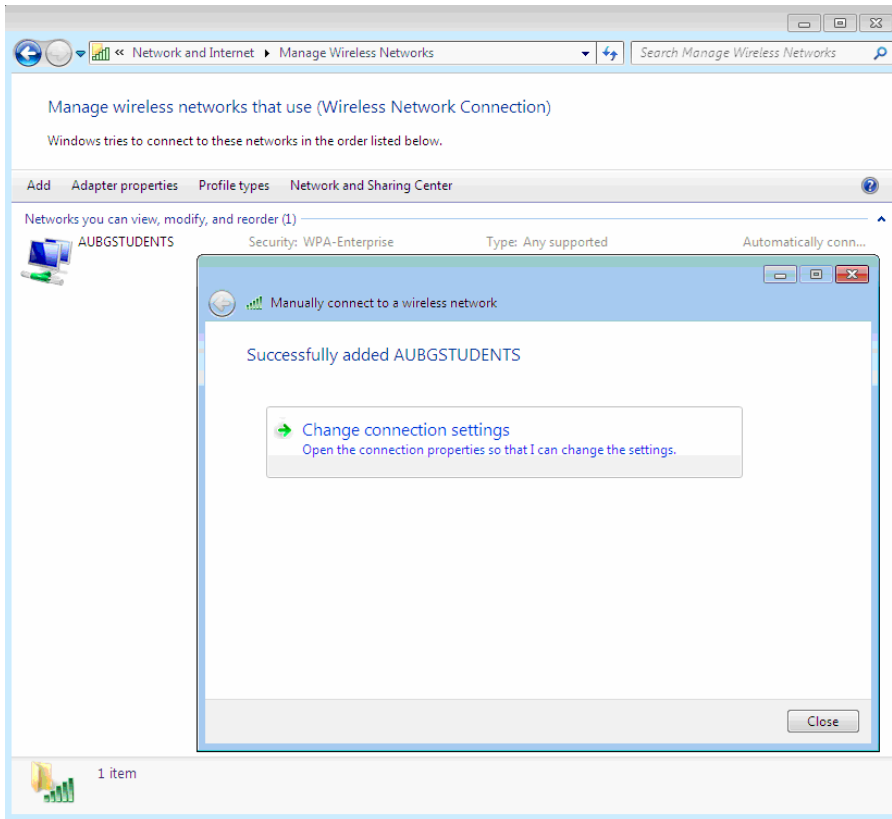
Security type: **WPA-Enterprise**

Encryption type: **TKIP**

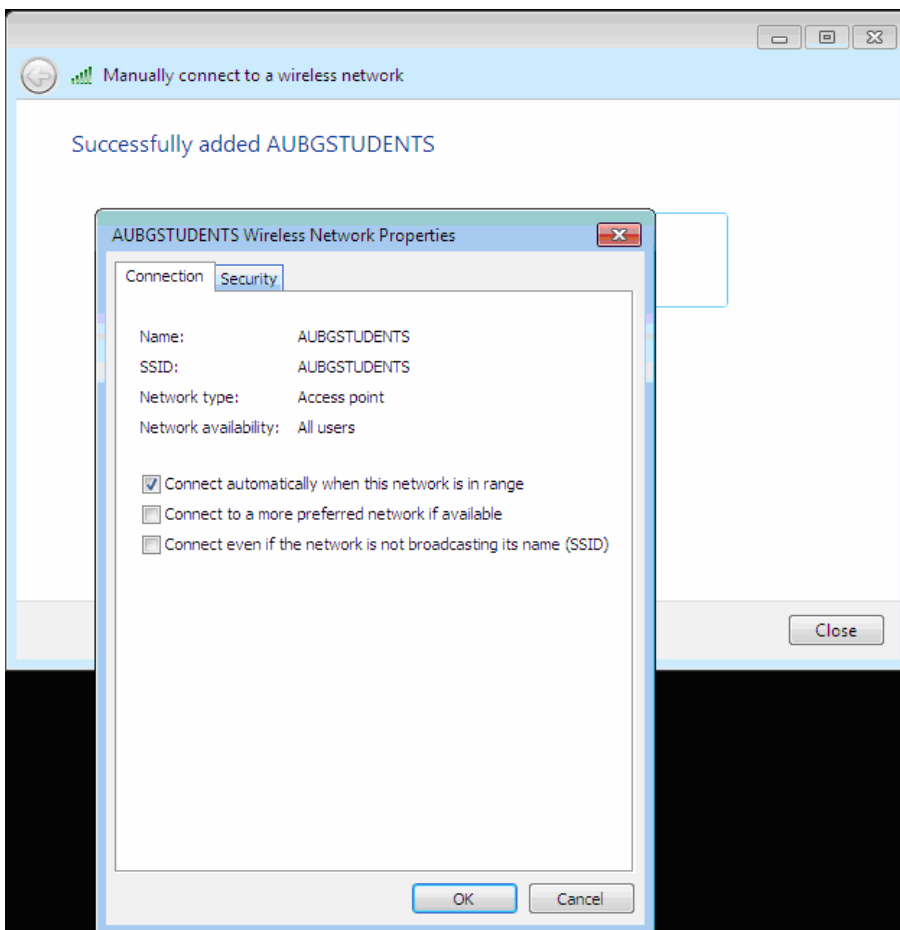
Click on the **Next** button



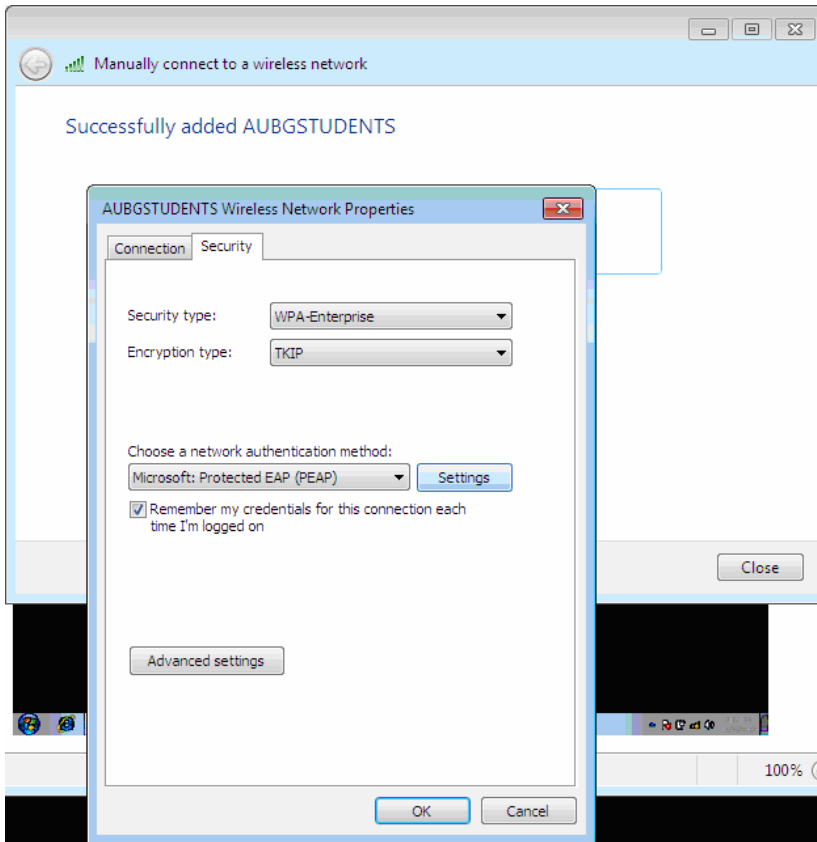
Click on the [Change connection settings](#).



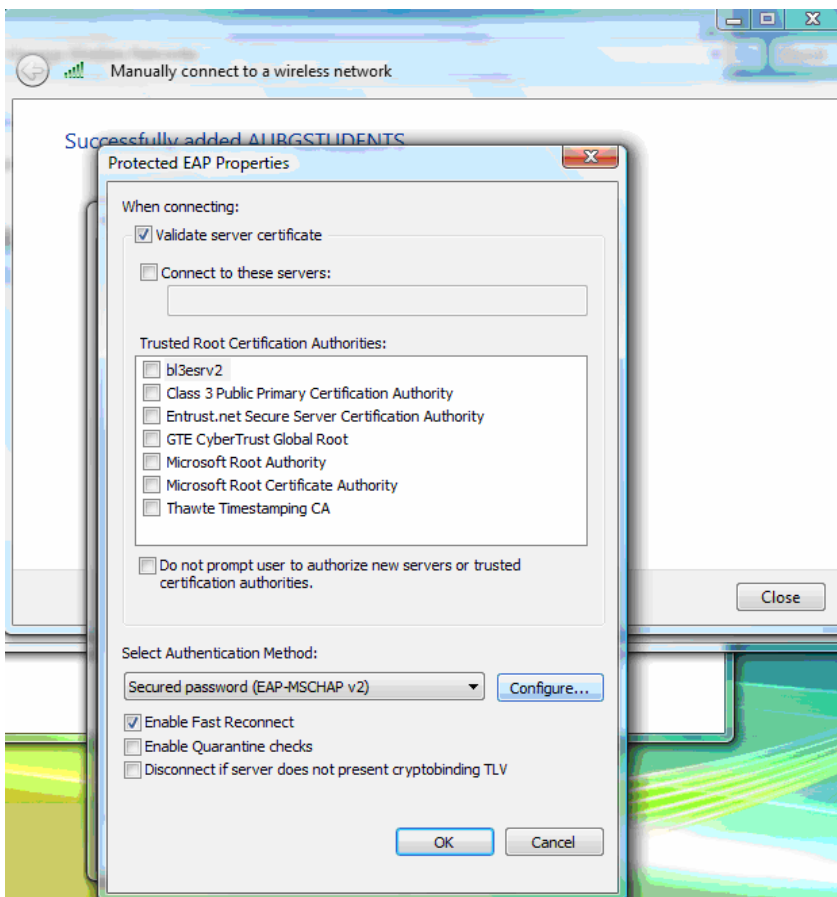
Click on the [Security](#) tab.



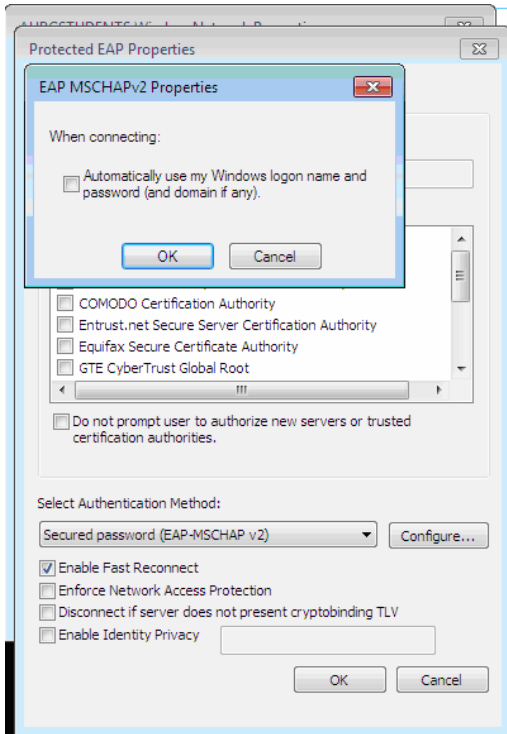
Click on the **Settings** button.



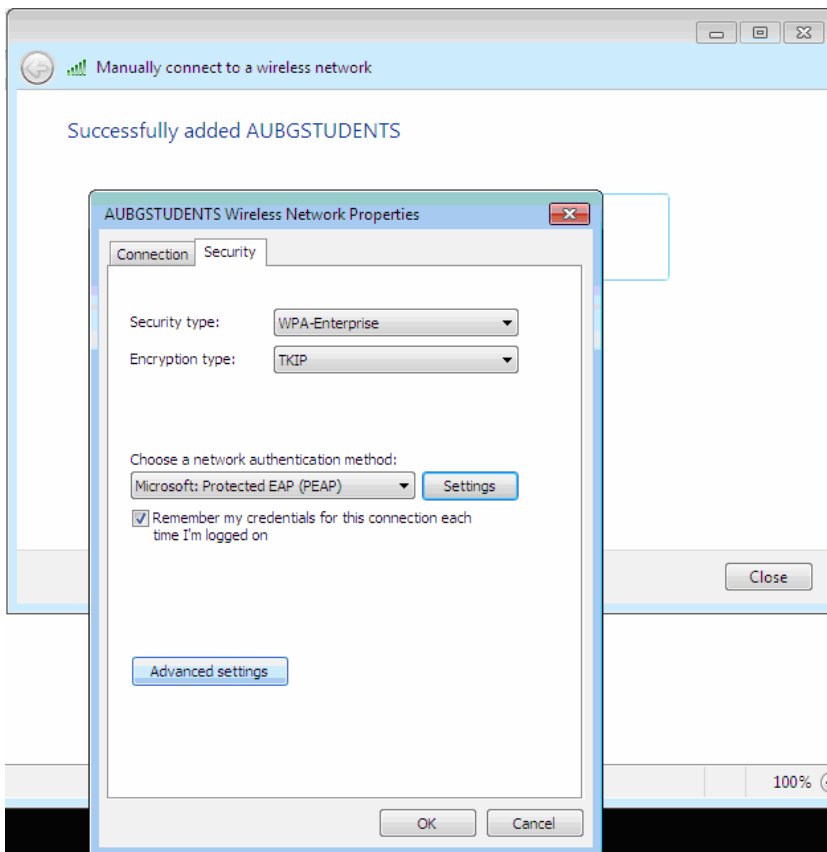
Change the settings as it is shown on the next screenshot and click on **Configure** button.



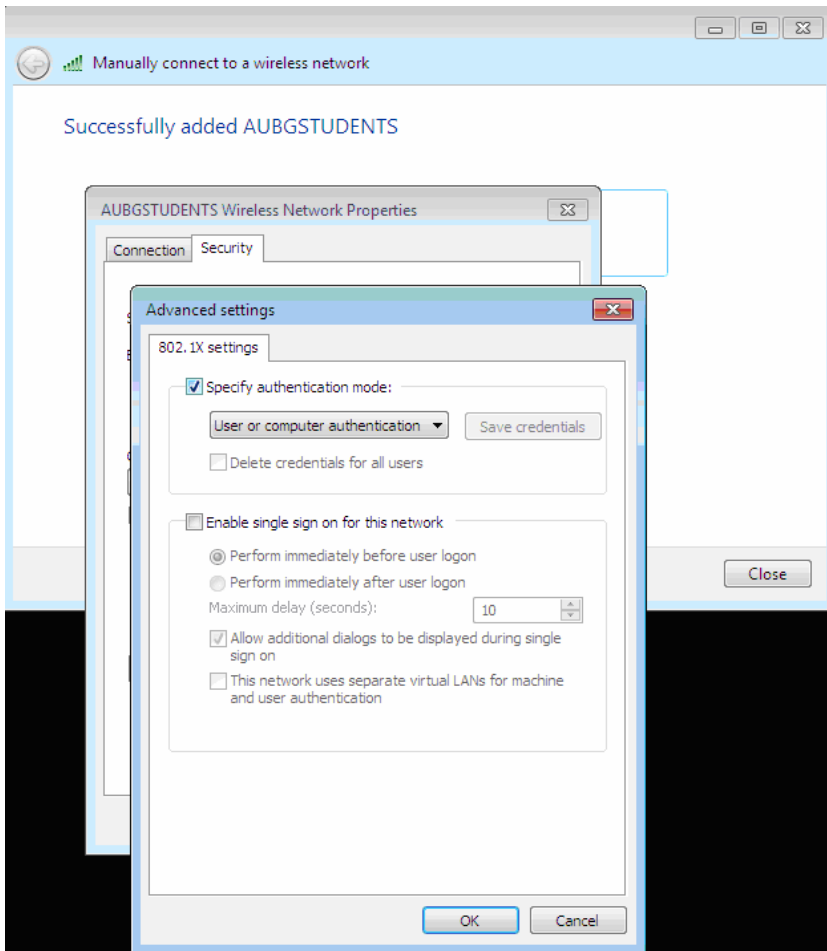
Clear the check box, if it is necessary and click **OK**.
Click on the **OK** button and click **OK** again.



Select the **Advanced settings** button.

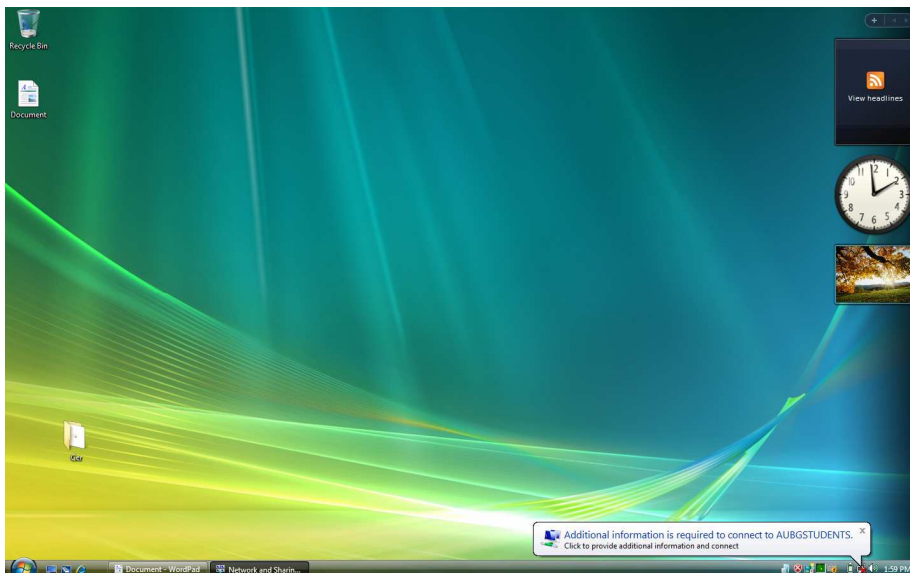


Check **Specify authentication mode** and choose **User or computer authentication**.

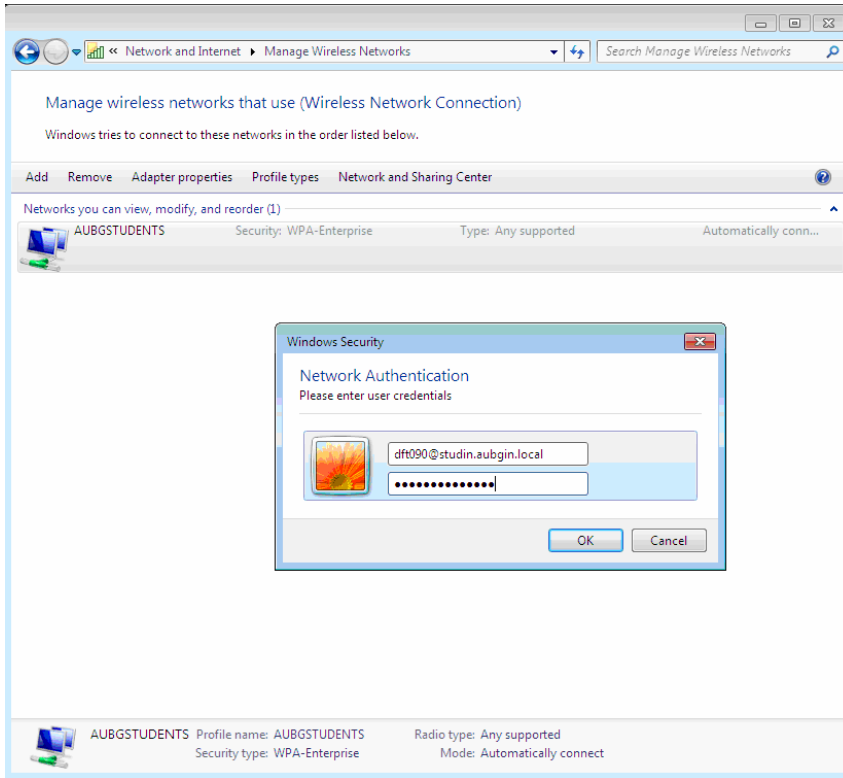


Click **OK**, **OK** and click on the **Close** button.

Click on the **balloon** in the right corner.



Enter your **User name** and **Password** as it is shown below.



Click **OK**.